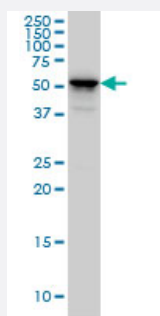


KRT4 monoclonal antibody (M01), clone 5H5

Catalog # H00003851-M01

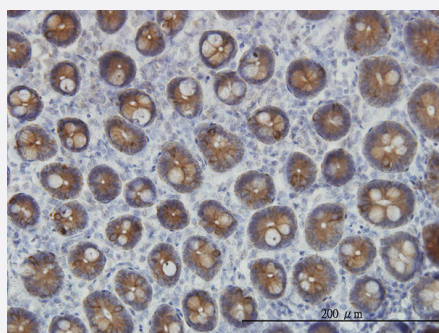
Size 100 ug

Applications



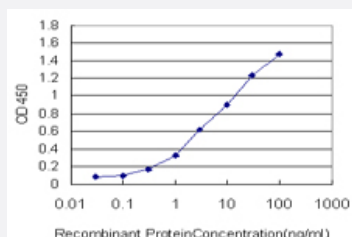
Western Blot (Cell lysate)

KRT4 monoclonal antibody (M01), clone 5H5 Western Blot analysis of KRT4 expression in A-431 (Cat # L015V1).



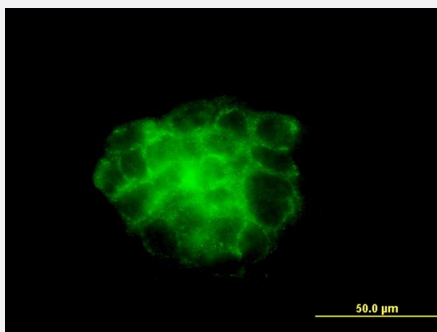
Immunohistochemistry (Formalin/PFA-fixed paraffin-embedded sections)

Immunoperoxidase of monoclonal antibody to KRT4 on formalin-fixed paraffin-embedded human small Intestine. [antibody concentration 3 ug/ml]



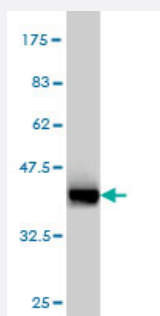
Sandwich ELISA (Recombinant protein)

Detection limit for recombinant GST tagged KRT4 is approximately 0.1ng/ml as a capture antibody.



Immunofluorescence

Immunofluorescence of monoclonal antibody to KRT4 on A-431 cell. [antibody concentration 10 ug/ml]



Western Blot detection against Immunogen (37.51 KDa) .

Specification

Product Description	Mouse monoclonal antibody raised against a partial recombinant KRT4.
Immunogen	KRT4 (NP_002263, 194 a.a. ~ 300 a.a) partial recombinant protein with GST tag. MW of the GST tag alone is 26 KDa.
Sequence	SSKNLEPLFETYLSVLRKQLDTLGNDKGRLQSELKTMQDSVEDFKTKYEEEINKRTAAENDFVVLKKDVDAAYLNKVELEAKVDSLNDENFLKVLDAELSQQMTH
Host	Mouse
Reactivity	Human
Interspecies Antigen Sequence	Mouse (82)
Isotype	IgG1 Kappa
Quality Control Testing	Antibody Reactive Against Recombinant Protein. Western Blot detection against Immunogen (37.51 KDa) .
Storage Buffer	In 1x PBS, pH 7.4
Storage Instruction	Store at -20°C or lower. Aliquot to avoid repeated freezing and thawing.

Applications

- Western Blot (Cell lysate)

KRT4 monoclonal antibody (M01), clone 5H5 Western Blot analysis of KRT4 expression in A-431 (Cat # L015V1).

[Protocol Download](#)

- Western Blot (Recombinant protein)

[Protocol Download](#)

- Immunohistochemistry (Formalin/PFA-fixed paraffin-embedded sections)

Immunoperoxidase of monoclonal antibody to KRT4 on formalin-fixed paraffin-embedded human small intestine. [antibody concentration 3 ug/ml]

[Protocol Download](#)

- Sandwich ELISA (Recombinant protein)

Detection limit for recombinant GST tagged KRT4 is approximately 0.1ng/ml as a capture antibody.

[Protocol Download](#)

- ELISA

- Immunofluorescence

Immunofluorescence of monoclonal antibody to KRT4 on A-431 cell. [antibody concentration 10 ug/ml]

Gene Info — KRT4

Entrez GeneID	3851
---------------	----------------------

GeneBank Accession#	NM_002272
---------------------	---------------------------

Protein Accession#	NP_002263
--------------------	---------------------------

Gene Name	KRT4
-----------	------

Gene Alias	CK4, CYK4, FLJ31692, K4
------------	-------------------------

Gene Description	keratin 4
------------------	-----------

Omim ID	123940 193900
---------	---

Gene Ontology

[Hyperlink](#)**Gene Summary**

The protein encoded by this gene is a member of the keratin gene family. The type II cytokeratins consist of basic or neutral proteins which are arranged in pairs of heterotypic keratin chains coexpressed during differentiation of simple and stratified epithelial tissues. This type II cytokeratin is specifically expressed in differentiated layers of the mucosal and esophageal epithelia with family member KRT13. Mutations in these genes have been associated with White Sponge Nevus, characterized by oral, esophageal, and anal leukoplakia. The type II cytokeratins are clustered in a region of chromosome 12q12-q13. [provided by RefSeq]

Other Designations

cytokeratin 4|keratin, type II cytoskeletal 4