

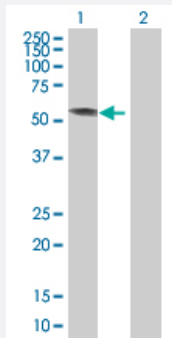
MaxPab®

## KRT4 MaxPab mouse polyclonal antibody (B01)

Catalog # H00003851-B01

Size 50 uL

### Applications



#### Western Blot (Transfected lysate)

Western Blot analysis of KRT4 expression in transfected 293T cell line ([H00003851-T01](#)) by KRT4 MaxPab polyclonal antibody.

Lane 1: KRT4 transfected lysate(58.74 kDa).

Lane 2: Non-transfected lysate.

### Specification

Product Description	Mouse polyclonal antibody raised against a full-length human KRT4 protein.
Immunogen	KRT4 (AAH42174.1, 1 a.a. ~ 534 a.a) full-length human protein.
Sequence	<p>MIARQQCVRGGRGFGSCGSAMGGGKRGAFSSVSMMSGGAGRCSSGGFGSRSLYNLRGNKSISM</p> <p>SVAGSRQGACFGGAGGFGTGGFGAGGFGAGFGTGGFGGGFGGSFSGKGGPGFPVCPAGGIQ</p> <p>EVTINQSLLTPLHVEIDPEIQKVRTEEREQIKLLNNKFASFIDKVQFLEQQNKVLETKWNLLQQQTTT</p> <p>TSSKNLEPLFETYL SVLRKQLD TLGNDKGRLQSELKTMQDSVEDFKTKYEEEINKRTAAENDFVV</p> <p>LKKDVDAAYLNKVELEAKVDSLND EINF LKVL YDAELS QMQTHVSDTSVVL SMDNNRNL DLD SIIA</p> <p>EVRAQYEEIAQRSKAEAEALYQTKVQQLQISVDQHGDNLKNTKSEIAELNRMQRLRAE IENIKKQC</p> <p>QTLQVSVADAEQRGENALKDAHSKRVELEAALQQAKEELARMLREYQELMSVKLALDIEIATYRK</p> <p>LLEGEEYRMSGECQSAVSISVSVSGSTSTGGISGGLGSGSGFGLSSGFGSGSGSGFGFGGSVSG</p> <p>SSSSKIISTTTLNKRR</p>
Host	Mouse
Reactivity	Human
Interspecies Antigen Sequence	Mouse (83)
Quality Control Testing	Antibody reactive against mammalian transfected lysate.

Storage Buffer	No additive
Storage Instruction	Store at -20°C or lower. Aliquot to avoid repeated freezing and thawing.
Note	For IHC and IF applications, antibody purification with Protein A will be needed prior to use.

## Applications

- Western Blot (Transfected lysate)

Western Blot analysis of KRT4 expression in transfected 293T cell line ([H00003851-T01](#)) by KRT4 MaxPab polyclonal antibody.

Lane 1: KRT4 transfected lysate(58.74 KDa).

Lane 2: Non-transfected lysate.

[Protocol Download](#)

## Gene Info — KRT4

Entrez GeneID	<a href="#">3851</a>
GeneBank Accession#	<a href="#">BC042174.1</a>
Protein Accession#	<a href="#">AAH42174.1</a>
Gene Name	KRT4
Gene Alias	CK4, CYK4, FLJ31692, K4
Gene Description	keratin 4
Omim ID	<a href="#">123940</a> <a href="#">193900</a>
Gene Ontology	<a href="#">Hyperlink</a>
Gene Summary	The protein encoded by this gene is a member of the keratin gene family. The type II cytokeratins consist of basic or neutral proteins which are arranged in pairs of heterotypic keratin chains coexpressed during differentiation of simple and stratified epithelial tissues. This type II cytokeratin is specifically expressed in differentiated layers of the mucosal and esophageal epithelia with family member KRT13. Mutations in these genes have been associated with White Sponge Nevus, characterized by oral, esophageal, and anal leukoplakia. The type II cytokeratins are clustered in a region of chromosome 12q12-q13. [provided by RefSeq]
Other Designations	cytokeratin 4 keratin, type II cytoskeletal 4