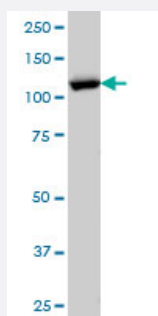


# RANBP5 monoclonal antibody (M01), clone 1C4

Catalog # H00003843-M01

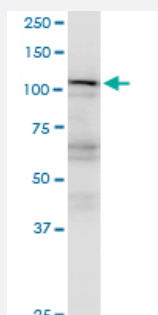
Size 100 ug

## Applications



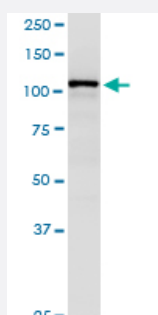
### Western Blot (Cell lysate)

RANBP5 monoclonal antibody (M01), clone 1C4 Western Blot analysis of RANBP5 expression in HeLa ( Cat # L013V1 ).



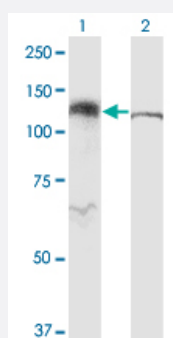
### Western Blot (Cell lysate)

RANBP5 monoclonal antibody (M01), clone 1C4. Western Blot analysis of IPO5 expression in PC-12.



### Western Blot (Cell lysate)

RANBP5 monoclonal antibody (M01), clone 1C4. Western Blot analysis of IPO5 expression in Raw 264.7.

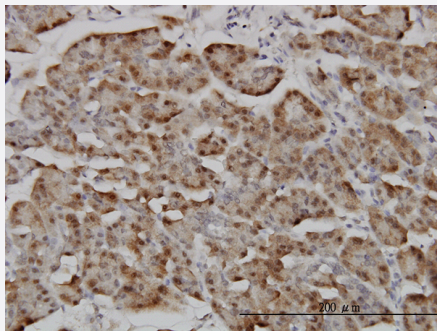


### Western Blot (Transfected lysate)

Western Blot analysis of IPO5 expression in transfected 293T cell line by RANBP5 monoclonal antibody (M01), clone 1C4.

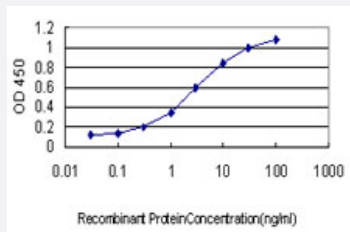
Lane 1: IPO5 transfected lysate (Predicted MW: 125.6 KDa).

Lane 2: Non-transfected lysate.



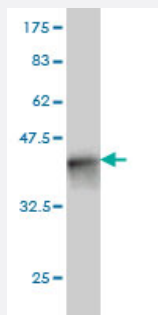
### Immunohistochemistry (Formalin/PFA-fixed paraffin-embedded sections)

Immunoperoxidase of monoclonal antibody to RANBP5 on formalin-fixed paraffin-embedded human pancreas. [antibody concentration 3 ug/ml]



### Sandwich ELISA (Recombinant protein)

Detection limit for recombinant GST tagged RANBP5 is approximately 0.03ng/ml as a capture antibody.



Western Blot detection against Immunogen (36.74 KDa) .

## Specification

<b>Product Description</b>	Mouse monoclonal antibody raised against a partial recombinant RANBP5.
<b>Immunogen</b>	RANBP5 (AAH01497, 1 a.a. ~ 100 a.a) partial recombinant protein with GST tag. MW of the GST tag alone is 26 KDa.
<b>Sequence</b>	MAAAAAEQQQFYLLGNLLSPDNVVRKQAEETYENIPGQSKITFLQAIRNTTAAEEARQMAAVLLRLLSSAFDEVYPALPSDVQTAIKSELLMIQME
<b>Host</b>	Mouse
<b>Reactivity</b>	Human, Mouse, Rat
<b>Isotype</b>	IgG1 Kappa
<b>Quality Control Testing</b>	Antibody Reactive Against Recombinant Protein. Western Blot detection against Immunogen (36.74 KDa) .

**Storage Buffer**

In 1x PBS, pH 7.4

**Storage Instruction**

Store at -20°C or lower. Aliquot to avoid repeated freezing and thawing.

## Applications

- Western Blot (Cell lysate)

RANBP5 monoclonal antibody (M01), clone 1C4 Western Blot analysis of RANBP5 expression in HeLa ( Cat # L013V1 ).

[Protocol Download](#)

- Western Blot (Cell lysate)

RANBP5 monoclonal antibody (M01), clone 1C4. Western Blot analysis of IPO5 expression in PC-12.

[Protocol Download](#)

- Western Blot (Cell lysate)

RANBP5 monoclonal antibody (M01), clone 1C4. Western Blot analysis of IPO5 expression in Raw 264.7.

[Protocol Download](#)

- Western Blot (Transfected lysate)

Western Blot analysis of IPO5 expression in transfected 293T cell line by RANBP5 monoclonal antibody (M01), clone 1C4.

Lane 1: IPO5 transfected lysate (Predicted MW: 125.6 KDa).

Lane 2: Non-transfected lysate.

[Protocol Download](#)

- Western Blot (Recombinant protein)

[Protocol Download](#)

- Immunohistochemistry (Formalin/PFA-fixed paraffin-embedded sections)

Immunoperoxidase of monoclonal antibody to RANBP5 on formalin-fixed paraffin-embedded human pancreas. [antibody concentration 3 ug/ml]

[Protocol Download](#)

- Sandwich ELISA (Recombinant protein)

Detection limit for recombinant GST tagged RANBP5 is approximately 0.03ng/ml as a capture antibody.

[Protocol Download](#)

- ELISA

## Gene Info — IPO5

Entrez GeneID [3843](#)

GeneBank Accession# [BC001497](#)

Protein Accession# [AAH01497](#)

Gene Name IPO5

Gene Alias DKFZp686O1576, FLJ43041, IMB3, KPNB3, MGC2068, RANBP5

Gene Description importin 5

Omim ID [602008](#)

Gene Ontology [Hyperlink](#)

**Gene Summary**

Nucleocytoplasmic transport, a signal- and energy-dependent process, takes place through nuclear pore complexes embedded in the nuclear envelope. The import of proteins containing a nuclear localization signal (NLS) requires the NLS import receptor, a heterodimer of importin alpha and beta subunits also known as karyopherins. Importin alpha binds the NLS-containing cargo in the cytoplasm and importin beta docks the complex at the cytoplasmic side of the nuclear pore complex. In the presence of nucleoside triphosphates and the small GTP binding protein Ran, the complex moves into the nuclear pore complex and the importin subunits dissociate. Importin alpha enters the nucleoplasm with its passenger protein and importin beta remains at the pore. Interactions between importin beta and the FG repeats of nucleoporins are essential in translocation through the pore complex. The protein encoded by this gene is a member of the importin beta family. [provided by RefSeq]

**Other Designations** OTTHUMP00000040733|RAN binding protein 5|Ran\_GTP binding protein 5|importin beta-3 subunit|karyopherin (importin) beta 3

## Publication Reference

- [Fas-Associated Factor 1 Negatively Regulates Antiviral Immune Response by Inhibiting Translocation of IRF3 to the Nucleus.](#)

Song S, Lee JJ, Kim HJ, Lee JY, Chang J, Lee KJ.

Molecular and Cellular Biology 2016 Jan; 36(7):1136.

Application: WB-Ce, Human, HeLa, HEK293T cells

- [Localization of retinitis pigmentosa 2 to cilia is regulated by Importin {beta}2.](#)

Hurd TW, Fan S, Margolis BL.

Journal of Cell Science 2011 Mar; 124(Pt 5):718.

Application: WB, Dog, MDCK cells

## Disease

- [Genetic Predisposition to Disease](#)
- [Schizophrenia](#)