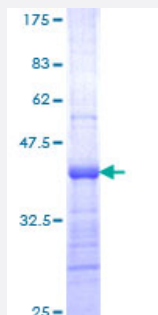


KPNA3 (Human) Recombinant Protein (Q01)

Catalog # H00003839-Q01

Size 25 ug, 10 ug

Applications



Specification

Product Description	Human KPNA3 partial ORF (NP_002258, 422 a.a. - 521 a.a.) recombinant protein with GST-tag at N-terminal.
Sequence	VKDSQVVQVVDGLKNILIMAGDEASTAEIIECGGLEKIEVLQQHENEDIYKLAFEIIDQYFSGDDID EDPCLIPeATQGGTYNFDPTANLQTKEFNF
Host	Wheat Germ (in vitro)
Theoretical MW (kDa)	36.74
Interspecies Antigen Sequence	Mouse (99); Rat (99)
Preparation Method	in vitro wheat germ expression system
Purification	Glutathione Sepharose 4 Fast Flow
Quality Control Testing	12.5% SDS-PAGE Stained with Coomassie Blue.
Storage Buffer	50 mM Tris-HCl, 10 mM reduced Glutathione, pH=8.0 in the elution buffer.
Storage Instruction	Store at -80°C. Aliquot to avoid repeated freezing and thawing.
Note	Best use within three months from the date of receipt of this protein.

Applications

- Enzyme-linked Immunoabsorbent Assay
- Western Blot (Recombinant protein)
- Antibody Production
- Protein Array

Gene Info — KPNA3

Entrez GeneID [3839](#)

GeneBank Accession# [NM_002267](#)

Protein Accession# [NP_002258](#)

Gene Name KPNA3

Gene Alias IPOA4, SRP1, SRP1gamma, SRP4, hSRP1

Gene Description karyopherin alpha 3 (importin alpha 4)

Omim ID [601892](#)

Gene Ontology [Hyperlink](#)

Gene Summary The transport of molecules between the nucleus and the cytoplasm in eukaryotic cells is mediated by the nuclear pore complex (NPC), which consists of 60-100 proteins. Small molecules (up to 70 kD) can pass through the nuclear pore by nonselective diffusion while larger molecules are transported by an active process. The protein encoded by this gene belongs to the importin alpha family, and is involved in nuclear protein import. [provided by RefSeq]

Other Designations OTTHUMP00000018426|importin alpha 4|importin alpha-3|importin-alpha-Q2|karyopherin alpha 3

Disease

- [Genetic Predisposition to Disease](#)
- [Schizophrenia](#)