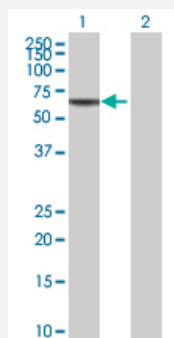


KPNA2 293T Cell Transient Overexpression Lysate(Denatured)

Catalog # H00003838-T01

Size 100 uL

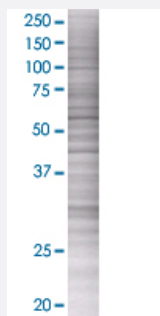
Applications



Western Blot

Lane 1: KPNA2 transfected lysate (57.9 KDa)

Lane 2: Non-transfected lysate.



SDS-PAGE Gel

KPNA2 transfected lysate.

Specification

Transfected Cell Line	293T
Plasmid	pCMV-KPNA2 full-length
Host	Human
Theoretical MW (kDa)	58.3
Interspecies Antigen Sequence	Mouse (95); Rat (95)

Quality Control Testing

Transient overexpression cell lysate was tested with Anti-KPNA2 antibody ([H00003838-B01](#)) by Western Blots.

Western Blot

Lane 1: KPNA2 transfected lysate (57.9 KDa)

Lane 2: Non-transfected lysate.

SDS-PAGE Gel

KPNA2 transfected lysate.

Storage Buffer

1X Sample Buffer (50 mM Tris-HCl, 2% SDS, 10% glycerol, 300 mM 2-mercaptoethanol, 0.01% Bromophenol blue)

Storage Instruction

Store at -80°C. Aliquot to avoid repeated freezing and thawing.

Applications

- Western Blot

Gene Info — KPNA2

Entrez GeneID[3838](#)**GeneBank Accession#**[NM_002266](#)**Protein Accession#**[NP_002257](#)**Gene Name**

KPNA2

Gene Alias

IPOA1, QIP2, RCH1, SRP1alpha

Gene Description

karyopherin alpha 2 (RAG cohort 1, importin alpha 1)

Omim ID[600685](#)**Gene Ontology**[Hyperlink](#)**Gene Summary**

The import of proteins into the nucleus is a process that involves at least 2 steps. The first is an energy-independent docking of the protein to the nuclear envelope and the second is an energy-dependent translocation through the nuclear pore complex. Imported proteins require a nuclear localization sequence (NLS) which generally consists of a short region of basic amino acids or 2 such regions spaced about 10 amino acids apart. Proteins involved in the first step of nuclear import have been identified in different systems. These include the Xenopus protein importin and its yeast homolog, SRP1 (a suppressor of certain temperature-sensitive mutations of RNA polymerase I in *Saccharomyces cerevisiae*), which bind to the NLS. KPNA2 protein interacts with the NLSs of DNA helicase Q1 and SV40 T antigen and may be involved in the nuclear transport of proteins. KPNA2 also may play a role in V(D)J recombination [provided by RefSeq]

Other Designations

RAG cohort 1|importin alpha 1|importin alpha 2|importin-alpha-P1|karyopherin alpha 2|pendulin

Disease

- [Breast Neoplasms](#)
- [Genetic Predisposition to Disease](#)
- [Ovarian Neoplasms](#)