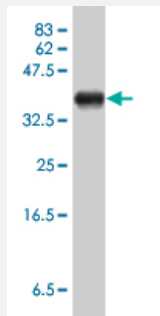


KPNA2 polyclonal antibody (A01)

Catalog # H00003838-A01

Size 50 uL

Applications



Western Blot detection against Immunogen (38.1 KDa) .

Specification

Product Description	Mouse polyclonal antibody raised against a partial recombinant KPNA2.
Immunogen	KPNA2 (NP_002257, 420 a.a. ~ 528 a.a) partial recombinant protein with GST tag.
Sequence	GII EPLMNL LTAKD TKILVILDAISNIFQAAENLGETEKL SIMIEECGGLDKIEALQNHENESVYKASLS LIEKYFSVEEEEDQNVVPETTSEGYTFQVQDGAPGTFN
Host	Mouse
Reactivity	Human
Interspecies Antigen Sequence	Mouse (94); Rat (94)
Quality Control Testing	Antibody Reactive Against Recombinant Protein. Western Blot detection against Immunogen (38.1 KDa) .
Storage Buffer	50 % glycerol
Storage Instruction	Store at -20°C or lower. Aliquot to avoid repeated freezing and thawing.

Applications

- Western Blot (Recombinant protein)

[Protocol Download](#)

- ELISA

Gene Info — KPNA2

Entrez GeneID [3838](#)

GeneBank Accession# [NM_002266](#)

Protein Accession# [NP_002257](#)

Gene Name KPNA2

Gene Alias IPOA1, QIP2, RCH1, SRP1alpha

Gene Description karyopherin alpha 2 (RAG cohort 1, importin alpha 1)

Omim ID [600685](#)

Gene Ontology [Hyperlink](#)

Gene Summary

The import of proteins into the nucleus is a process that involves at least 2 steps. The first is an energy-independent docking of the protein to the nuclear envelope and the second is an energy-dependent translocation through the nuclear pore complex. Imported proteins require a nuclear localization sequence (NLS) which generally consists of a short region of basic amino acids or 2 such regions spaced about 10 amino acids apart. Proteins involved in the first step of nuclear import have been identified in different systems. These include the Xenopus protein importin and its yeast homolog, SRP1 (a suppressor of certain temperature-sensitive mutations of RNA polymerase I in *Saccharomyces cerevisiae*), which bind to the NLS. KPNA2 protein interacts with the NLSs of DNA helicase Q1 and SV40 T antigen and may be involved in the nuclear transport of proteins. KPNA2 also may play a role in V(D)J recombination [provided by RefSeq]

Other Designations RAG cohort 1|importin alpha 1|importin alpha 2|importin-alpha-P1|karyopherin alpha 2|pendulin

Disease

- [Breast Neoplasms](#)
- [Genetic Predisposition to Disease](#)
- [Ovarian Neoplasms](#)