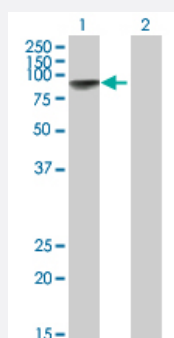


# KIF22 293T Cell Transient Overexpression Lysate(Denatured)

Catalog # H00003835-T01

Size 100 uL

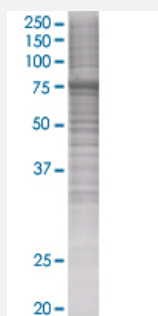
## Applications



### Western Blot

Lane 1: KIF22 transfected lysate ( 73.3 KDa)

Lane 2: Non-transfected lysate.



### SDS-PAGE Gel

KIF22 transfected lysate.

## Specification

Transfected Cell Line	293T
Plasmid	pCMV-KIF22 full-length
Host	Human
Theoretical MW (kDa)	73.26
Interspecies Antigen Sequence	Mouse (81); Rat (82)

**Quality Control Testing**

Transient overexpression cell lysate was tested with Anti-KIF22 antibody ([H00003835-B01](#)) by Western Blots.

Western Blot

Lane 1: KIF22 transfected lysate ( 73.3 KDa)

Lane 2: Non-transfected lysate.

SDS-PAGE Gel

KIF22 transfected lysate.

**Storage Buffer**

1X Sample Buffer (50 mM Tris-HCl, 2% SDS, 10% glycerol, 300 mM 2-mercaptoethanol, 0.01% Bromophenol blue)

**Storage Instruction**

Store at -80°C. Aliquot to avoid repeated freezing and thawing.

## Applications

- Western Blot

## Gene Info — KIF22

**Entrez GeneID**[3835](#)**GeneBank Accession#**[NM\\_007317](#)**Protein Accession#**[NP\\_015556](#)**Gene Name**

KIF22

**Gene Alias**

KID, KNSL4, OBP, OBP-1, OBP-2

**Gene Description**

kinesin family member 22

**Omim ID**[603213](#)**Gene Ontology**[Hyperlink](#)**Gene Summary**

The protein encoded by this gene is a member of kinesin-like protein family. This family of proteins are microtubule-dependent molecular motors that transport organelles within cells and move chromosomes during cell division. The C-terminal half of this protein has been shown to bind DNA. Studies with the *Xenopus* homolog suggests its essential role in metaphase chromosome alignment and maintenance. [provided by RefSeq]

**Other Designations**

kinesin-like 4|oriP binding protein|origin of plasmid DNA replication-binding protein