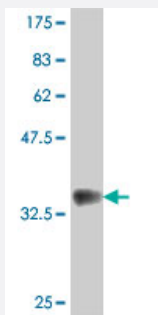


KLRB1 polyclonal antibody (A01)

Catalog # H00003820-A01

Size 50 uL

Applications



Western Blot detection against Immunogen (37.11 kDa) .

Specification

Product Description	Mouse polyclonal antibody raised against a partial recombinant KLRB1.
Immunogen	KLRB1 (NP_002249, 126 a.a. ~ 225 a.a) partial recombinant protein with GST tag.
Sequence	ESSLLLIRDKDELIHTQNLIRDKAILFWIGLNFSLSEKNWKWINGSFLNSNDLEIRGDAKENSISISQ TSVYSEYCYSTEIRWICQKELTPVRNKVYPDS
Host	Mouse
Reactivity	Human
Interspecies Antigen Sequence	Mouse (50); Rat (51)
Quality Control Testing	Antibody Reactive Against Recombinant Protein. Western Blot detection against Immunogen (37.11 kDa) .
Storage Buffer	50 % glycerol
Storage Instruction	Store at -20°C or lower. Aliquot to avoid repeated freezing and thawing.

Applications

- Western Blot (Recombinant protein)

[Protocol Download](#)

- ELISA

Gene Info — KLRB1

Entrez GeneID [3820](#)

GeneBank Accession# [NM_002258](#)

Protein Accession# [NP_002249](#)

Gene Name KLRB1

Gene Alias CD161, CLEC5B, MGC138614, NKR, NKR-P1, NKR-P1A, NKRP1A, hNKR-P1A

Gene Description killer cell lectin-like receptor subfamily B, member 1

Omim ID [602890](#)

Gene Ontology [Hyperlink](#)

Gene Summary Natural killer (NK) cells are lymphocytes that mediate cytotoxicity and secrete cytokines after immune stimulation. Several genes of the C-type lectin superfamily, including the rodent NKRP1 family of glycoproteins, are expressed by NK cells and may be involved in the regulation of NK cell function. The KLRB1 protein contains an extracellular domain with several motifs characteristic of C-type lectins, a transmembrane domain, and a cytoplasmic domain. The KLRB1 protein is classified as a type II membrane protein because it has an external C terminus. [provided by RefSeq]

Other Designations -

Disease

- [Genetic Predisposition to Disease](#)
- [Multiple Sclerosis](#)