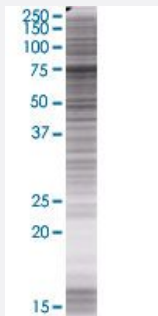


KIFC3 293T Cell Transient Overexpression Lysate(Denatured)

Catalog # H00003801-T01

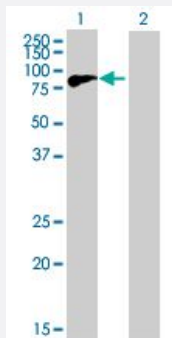
Size 100 uL

Applications



SDS-PAGE Gel

KIFC3 transfected lysate.



Western Blot

Lane 1: KIFC3 transfected lysate (77 KDa)

Lane 2: Non-transfected lysate.

Specification

Transfected Cell Line	293T
Plasmid	pCMV-KIFC3 full-length
Host	Human
Theoretical MW (kDa)	77
Interspecies Antigen Sequence	Mouse (95); Rat (95)

Quality Control Testing

Transient overexpression cell lysate was tested with Anti-KIFC3 antibody ([H00003801-B01](#)) by Western Blots.
SDS-PAGE Gel
KIFC3 transfected lysate.
Western Blot
Lane 1: KIFC3 transfected lysate (77 KDa)
Lane 2: Non-transfected lysate.

Storage Buffer

1X Sample Buffer (50 mM Tris-HCl, 2% SDS, 10% glycerol, 300 mM 2-mercaptoethanol, 0.01% Bromophenol blue)

Storage Instruction

Store at -80°C. Aliquot to avoid repeated freezing and thawing.

Applications

- Western Blot

Gene Info — KIFC3

Entrez GeneID[3801](#)**GeneBank Accession#**[BC034234](#)**Protein Accession#**[AAH34234](#)**Gene Name**

KIFC3

Gene Alias

DKFZp686D23201, FLJ34694

Gene Description

kinesin family member C3

Omim ID[604535](#)**Gene Ontology**[Hyperlink](#)**Gene Summary**

KIFC3 belongs to the large superfamily of kinesins, molecular motors that use the energy of ATP hydrolysis to translocate cargoes along microtubules. Members share extensive homology within a globular domain containing the microtubule- and ATP-binding sites and have a coiled-coil stalk domain that mediates oligomerization. Different kinesin family members participate in specific and diverse motile processes, such as cell division, organelle transport, and nuclear movement (Hoang et al., 1998 [PubMed 9782090]).[supplied by OMIM]

Other Designations

-

Disease

- [Cardiovascular Diseases](#)
- [Diabetes Mellitus](#)
- [Edema](#)