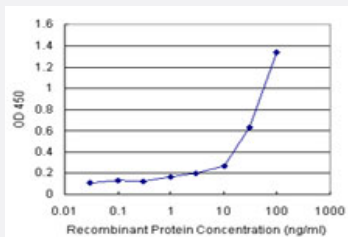


KHK (Human) Matched Antibody Pair

Catalog # H00003795-AP11 Size 1 Set

Applications



Sandwich ELISA detection sensitivity ranging from 1 ng/ml to 100 ng/ml.

Specification

Product Description	This antibody pair set comes with a matched antibody pair to detect and quantify the protein level of human KHK.
Reactivity	Human
Quality Control Testing	Standard curve using recombinant protein (H00003795-P01) as an analyte. Sandwich ELISA detection sensitivity ranging from 1 ng/ml to 100 ng/ml.
Supplied Product	Antibody pair set content: 1. Capture antibody: rabbit MaxPab® affinity purified polyclonal anti-KHK (100 ug) 2. Detection antibody: mouse monoclonal anti-KHK, IgG2a Kappa (20 ug) *Reagents are sufficient for at least 1-2 x 96 well plates using recommended protocols.
Storage Instruction	Store reagents of the antibody pair set at -20°C or lower. Please aliquot to avoid repeated freeze thaw cycle. Reagents should be returned to -20°C storage immediately after use.

Applications

- ELISA Pair (Recombinant protein)

[Protocol Download](#)

Gene Info — KHK

Entrez GeneID	3795
Gene Name	KHK
Gene Alias	-
Gene Description	ketoheokinase (fructokinase)
Omim ID	229800
Gene Ontology	Hyperlink
Gene Summary	This gene encodes ketoheokinase that catalyzes conversion of fructose to fructose-1-phosphate. The product of this gene is the first enzyme with a specialized pathway that catabolizes dietary fructose. Alternatively spliced transcript variants encoding different isoforms have been identified. [provided by RefSeq]
Other Designations	ketoheokinase

Pathway

- [Fructose and mannose metabolism](#)
- [Metabolic pathways](#)

Disease

- [Cardiovascular Diseases](#)
- [Diabetes Mellitus](#)
- [Edema](#)