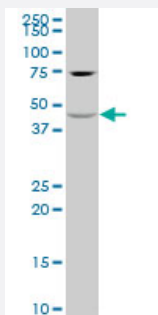


KCNJ16 polyclonal antibody (A01)

Catalog # H00003773-A01

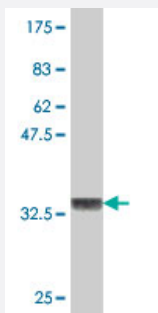
Size 50 uL

Applications



Western Blot (Cell lysate)

KCNJ16 polyclonal antibody (A01), Lot # 060707JCS1 Western Blot analysis of KCNJ16 expression in HeLa (Cat # L013V1).



Western Blot detection against Immunogen (36.89 KDa) .

Specification

Product Description	Mouse polyclonal antibody raised against a partial recombinant KCNJ16.
Immunogen	KCNJ16 (NP_061128, 319 a.a. ~ 416 a.a) partial recombinant protein with GST tag.
Sequence	KYYKVNCLQFEGSVYAPFCSAKQLDWKDQQLHIEKAPPVRESCTSDTKARRRSFSAVAIVSS CENPEETTSATHEYRETPYQKALLTLNRISVES
Host	Mouse
Reactivity	Human
Interspecies Antigen Sequence	Mouse (80); Rat (81)

Quality Control Testing

Antibody Reactive Against Recombinant Protein.
Western Blot detection against Immunogen (36.89 KDa) .

Storage Buffer

50 % glycerol

Storage Instruction

Store at -20°C or lower. Aliquot to avoid repeated freezing and thawing.

Applications

- Western Blot (Cell lysate)

KCNJ16 polyclonal antibody (A01), Lot # 060707JCS1 Western Blot analysis of KCNJ16 expression in HeLa (Cat # L013V1).

[Protocol Download](#)

- Western Blot (Recombinant protein)

[Protocol Download](#)

- ELISA

Gene Info — KCNJ16

Entrez GeneID

[3773](#)

GeneBank Accession#

[NM_018658](#)

Protein Accession#

[NP_061128](#)

Gene Name

KCNJ16

Gene Alias

BIR9, KIR5.1, MGC33717

Gene Description

potassium inwardly-rectifying channel, subfamily J, member 16

Omim ID

[605722](#)

Gene Ontology

[Hyperlink](#)

Gene Summary

Potassium channels are present in most mammalian cells, where they participate in a wide range of physiologic responses. The protein encoded by this gene is an integral membrane protein and inward-rectifier type potassium channel. The encoded protein, which has a greater tendency to allow potassium to flow into a cell rather than out of a cell, can form heterodimers with two other inward-rectifier type potassium channels. It may be involved in the regulation of fluid and pH balance. Three transcript variants encoding the same protein have been found for this gene. [provided by RefSeq]

Other Designationsinward rectifier K⁺ channel KIR5.1|potassium inwardly-rectifying channel J16**Disease**

- [Celiac Disease](#)
- [Genetic Predisposition to Disease](#)
- [Tobacco Use Disorder](#)