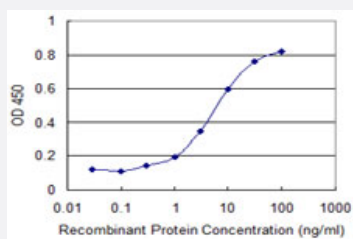


KCNC3 monoclonal antibody (M02), clone 6F7

Catalog # H00003748-M02

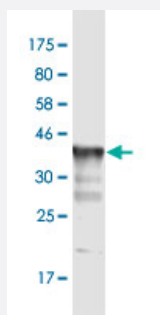
Size 100 ug

Applications



Sandwich ELISA (Recombinant protein)

Detection limit for recombinant GST tagged KCNC3 is 0.1 ng/ml as a capture antibody.



Western Blot detection against Immunogen (35.31 KDa) .

Specification

Product Description

Mouse monoclonal antibody raised against a partial recombinant KCNC3.

Immunogen

KCNC3 (NP_004968, 671 a.a. ~ 757 a.a) partial recombinant protein with GST tag. MW of the GST tag alone is 26 KDa.

Sequence

ALAHEDCPAIDQPAMSPEDKSPITPGSRGRYSRDRACFLLTDYAPSPDGSIRKATGAPPLPPQD
WRKPGPPSFLPDLNANAAAWISP

Host

Mouse

Reactivity

Human

Interspecies Antigen Sequence	Mouse (96)
Isotype	IgG2b Kappa
Quality Control Testing	Antibody Reactive Against Recombinant Protein. Western Blot detection against Immunogen (35.31 KDa) .
Storage Buffer	In 1x PBS, pH 7.4
Storage Instruction	Store at -20°C or lower. Aliquot to avoid repeated freezing and thawing.

Applications

- Western Blot (Recombinant protein)

[Protocol Download](#)

- Sandwich ELISA (Recombinant protein)

Detection limit for recombinant GST tagged KCNC3 is 0.1 ng/ml as a capture antibody.

[Protocol Download](#)

- ELISA

Gene Info — KCNC3

Entrez GeneID	3748
GeneBank Accession#	NM_004977
Protein Accession#	NP_004968
Gene Name	KCNC3
Gene Alias	KSHIID, KV3.3, SCA13
Gene Description	potassium voltage-gated channel, Shaw-related subfamily, member 3
Omim ID	176264 605259
Gene Ontology	Hyperlink

Gene Summary

The Shaker gene family of Drosophila encodes components of voltage-gated potassium channels and is comprised of four subfamilies. Based on sequence similarity, this gene is similar to one of these subfamilies, namely the Shaw subfamily. The protein encoded by this gene belongs to the delayed rectifier class of channel proteins and is an integral membrane protein that mediates the voltage-dependent potassium ion permeability of excitable membranes. [provided by RefSeq]

Other Designations

Shaw-related voltage-gated potassium channel protein 3|voltage-gated potassium channel protein KV3.3

Disease

- [Spinocerebellar ataxia](#)
- [Spinocerebellar Ataxias](#)