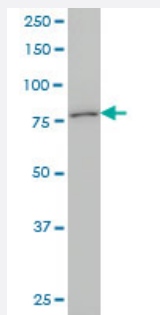


KCNC3 monoclonal antibody (M01), clone 1C1

Catalog # H00003748-M01

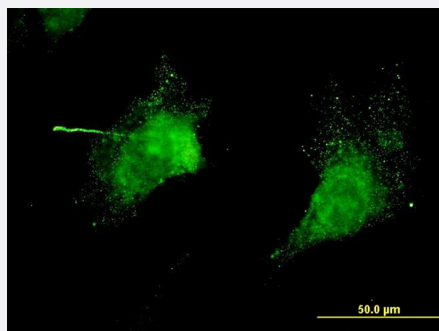
Size 100 ug

Applications



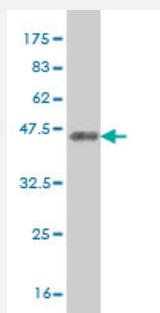
Western Blot (Cell lysate)

KCNC3 monoclonal antibody (M01), clone 1C1 Western Blot analysis of KCNC3 expression in NIH/3T3 (Cat # L018V1).



Immunofluorescence

Immunofluorescence of monoclonal antibody to KCNC3 on NIH/3T3 cell. [antibody concentration 10 ug/ml]



Western Blot detection against Immunogen (35.31 KDa) .

Specification

Product Description

Mouse monoclonal antibody raised against a partial recombinant KCNC3.

Immunogen	KCNC3 (NP_004968, 671 a.a. ~ 757 a.a) partial recombinant protein with GST tag. MW of the GST tag alone is 26 KDa.
Sequence	ALAHEDCPAIDQPAMSPEDKSPITPGSRGRYSRDRACFLLTDYAPSPDGSIRKATGAPPLPPQD WRKPGPPSFLPDLNANAAAWISP
Host	Mouse
Reactivity	Human, Mouse
Interspecies Antigen Sequence	Mouse (96)
Isotype	IgG1 Kappa
Quality Control Testing	Antibody Reactive Against Recombinant Protein. Western Blot detection against Immunogen (35.31 KDa) .
Storage Buffer	In 1x PBS, pH 7.4
Storage Instruction	Store at -20°C or lower. Aliquot to avoid repeated freezing and thawing.

Applications

- Western Blot (Cell lysate)

KCNC3 monoclonal antibody (M01), clone 1C1 Western Blot analysis of KCNC3 expression in NIH/3T3 (Cat # L018V1).

[Protocol Download](#)

- Western Blot (Recombinant protein)

[Protocol Download](#)

- ELISA

- Immunofluorescence

Immunofluorescence of monoclonal antibody to KCNC3 on NIH/3T3 cell. [antibody concentration 10 ug/ml]

Gene Info — KCNC3

Entrez GeneID [3748](#)

GeneBank Accession# [NM_004977](#)

Protein Accession#	NP_004968
Gene Name	KCNC3
Gene Alias	KSHIID, KV3.3, SCA13
Gene Description	potassium voltage-gated channel, Shaw-related subfamily, member 3
Omim ID	176264 605259
Gene Ontology	Hyperlink
Gene Summary	The Shaker gene family of Drosophila encodes components of voltage-gated potassium channels and is comprised of four subfamilies. Based on sequence similarity, this gene is similar to one of these subfamilies, namely the Shaw subfamily. The protein encoded by this gene belongs to the delayed rectifier class of channel proteins and is an integral membrane protein that mediates the voltage-dependent potassium ion permeability of excitable membranes. [provided by RefSeq]
Other Designations	Shaw-related voltage-gated potassium channel protein 3 voltage-gated potassium channel protein KV3.3

Publication Reference

- [Volumetric and ionic regulation during the in vitro development of a corneal endothelial barrier.](#)

Alaminos A, Gonzalez-Andrades M, Munoz-Avila JI, Garzon I, Sanchez-Quevedo MC, Campos A.

Experimental Eye Research 2008 Feb; 86(5):758.

Application: WB, Rabbit, Rabbit corneal endothelial cells

Disease

- [Spinocerebellar ataxia](#)
- [Spinocerebellar Ataxias](#)