

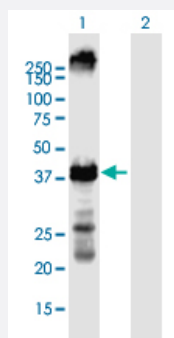
MaxPab®

# KCNA2 purified MaxPab mouse polyclonal antibody (B01P)

Catalog # H00003737-B01P

Size 50 ug

## Applications



### Western Blot (Transfected lysate)

Western Blot analysis of KCNA2 expression in transfected 293T cell line ([H00003737-T01](#)) by KCNA2 MaxPab polyclonal antibody.

Lane 1: KCNA2 transfected lysate(41 KDa).

Lane 2: Non-transfected lysate.

## Specification

### Product Description

Mouse polyclonal antibody raised against a full-length human KCNA2 protein.

### Immunogen

KCNA2 (AAH43564.1, 1 a.a. ~ 356 a.a) full-length human protein.

### Sequence

MTVATGDPADAAAALPGHPQDTYDPEADHECCERVVINISGLRFETQLKTLAQFPETLLGDPKKR  
MRYFDPLRNEYFFDRNRPSFDAILYYYQSGGRLRRPVNVPLDIFSEEIRFYELGEEAMEMFREDEG  
YKEEERLPENEFQRQVWLLFEYPESGPARIAMSVMVILISVSFCLETLPFRDENEDMHGSGV  
TFHTYSNSTIGYQQSTSFDPFFMETLCIWFSEFEFLVRFFACPSKAGFFTNIMNIIDVAIIPYFITLGT  
LAKEPEDAQGGQAMSLAILRVIRLERRPLQSQSKRGRQHLNTSHDCTLGINLVAGMTVQWTRA  
SGPDDRQTPAVTTLHRMY

### Host

Mouse

### Reactivity

Human

### Quality Control Testing

Antibody reactive against mammalian transfected lysate.

### Storage Buffer

In 1x PBS, pH 7.4

### Storage Instruction

Store at -20°C or lower. Aliquot to avoid repeated freezing and thawing.

## Applications

- Western Blot (Transfected lysate)

Western Blot analysis of KCNA2 expression in transfected 293T cell line ([H00003737-T01](#)) by KCNA2 MaxPab polyclonal antibody.

Lane 1: KCNA2 transfected lysate(41 KDa).

Lane 2: Non-transfected lysate.

[Protocol Download](#)

## Gene Info — KCNA2

Entrez GeneID [3737](#)

GeneBank Accession# [BC043564.1](#)

Protein Accession# [AAH43564.1](#)

Gene Name KCNA2

Gene Alias HBK5, HK4, HUKIV, KV1.2, MGC50217, MK2, NGK1, RBK2

Gene Description potassium voltage-gated channel, shaker-related subfamily, member 2

Omim ID [176262](#)

Gene Ontology [Hyperlink](#)

**Gene Summary** Potassium channels represent the most complex class of voltage-gated ion channels from both functional and structural standpoints. Their diverse functions include regulating neurotransmitter release, heart rate, insulin secretion, neuronal excitability, epithelial electrolyte transport, smooth muscle contraction, and cell volume. Four sequence-related potassium channel genes - shaker, shaw, shab, and shal - have been identified in Drosophila, and each has been shown to have human homolog(s). This gene encodes a member of the potassium channel, voltage-gated, shaker-related subfamily. This member contains six membrane-spanning domains with a shaker-type repeat in the fourth segment. It belongs to the delayed rectifier class, members of which allow nerve cells to efficiently repolarize following an action potential. The coding region of this gene is intronless, and the gene is clustered with genes KCNA3 and KCNA10 on chromosome 1. [provided by RefSeq]

**Other Designations** potassium channel|voltage-gated potassium channel protein Kv1.2