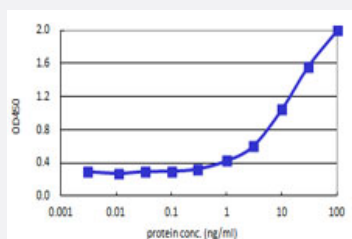


# JAG2 (Human) Matched Antibody Pair

Catalog # H00003714-AP41

Size 1 Set

## Applications



Sandwich ELISA detection sensitivity ranging from 0.3 ng/ml to 100 ng/ml.

## Specification

<b>Product Description</b>	This antibody pair set comes with a matched antibody pair to detect and quantify the protein level of human JAG2.
<b>Reactivity</b>	Human
<b>Quality Control Testing</b>	Standard curve using recombinant protein ( H00003714-Q02 ) as an analyte. Sandwich ELISA detection sensitivity ranging from 0.3 ng/ml to 100 ng/ml.
<b>Supplied Product</b>	Antibody pair set content: 1. Capture antibody: mouse monoclonal anti-JAG2, IgG2a Kappa (100 ug) 2. Detection antibody: biotinylated mouse monoclonal anti-JAG2, IgG2a Kappa (50 ug) *Reagents are sufficient for at least 3-5 x 96 well plates using recommended protocols.
<b>Storage Instruction</b>	Store reagents of the antibody pair set at -20°C or lower. Please aliquot to avoid repeated freeze thaw cycle. Reagents should be returned to -20°C storage immediately after use.

## Applications

- ELISA Pair (Recombinant protein)

[Protocol Download](#)

## Gene Info — JAG2

Entrez GeneID [3714](#)

Gene Name JAG2

Gene Alias HJ2, SER2

Gene Description jagged 2

Omim ID [602570](#)

Gene Ontology [Hyperlink](#)

**Gene Summary** The Notch signaling pathway is an intercellular signaling mechanism that is essential for proper embryonic development. Members of the Notch gene family encode transmembrane receptors that are critical for various cell fate decisions. The protein encoded by this gene is one of several ligands that activate Notch and related receptors. Two transcript variants encoding different isoforms have been found for this gene. [provided by RefSeq]

Other Designations -

## Pathway

- [Notch signaling pathway](#)

## Disease

- [Cleft Lip](#)
- [Cleft Palate](#)
- [Dominance](#)
- [Ectodermal Dysplasia](#)
- [Genetic Predisposition to Disease](#)
- [Schizophrenia](#)
- [Syndrome](#)