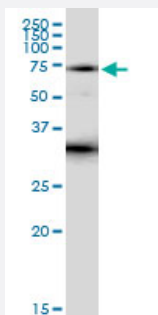


ITK (Human) IP-WB Antibody Pair

Catalog # H00003702-PW1

Size 1 Set

Applications



Immunoprecipitation of ITK transfected lysate using rabbit polyclonal anti-ITK and Protein A Magnetic Bead ([U0007](#)), and immunoblotted with mouse polyclonal anti-ITK.

Specification

| | |
|--------------------------------------|---|
| Product Description | This IP-WB antibody pair set comes with one antibody for immunoprecipitation and another to detect the precipitated protein in western blot. |
| Reactivity | Human |
| Interspecies Antigen Sequence | Mouse (93%); Rat (93%) |
| Quality Control Testing | Immunoprecipitation-Western Blot (IP-WB) Immunoprecipitation of ITK transfected lysate using rabbit polyclonal anti-ITK and Protein A Magnetic Bead (U0007), and immunoblotted with mouse polyclonal anti-ITK. |
| Supplied Product | Antibody pair set content: 1. Antibody pair for IP: rabbit polyclonal anti-ITK (300 ul) 2. Antibody pair for WB: mouse polyclonal anti-ITK (50 ul) |
| Storage Instruction | Store reagents of the antibody pair set at -20°C or lower. Please aliquot to avoid repeated freeze thaw cycle. Reagents should be returned to -20°C storage immediately after use. |

Applications

- Immunoprecipitation-Western Blot

[Protocol Download](#)

Gene Info — ITK

| | |
|--------------------|---|
| Entrez GeneID | 3702 |
| Gene Name | ITK |
| Gene Alias | EMT, LYK, MGC126257, MGC126258, PSCTK2 |
| Gene Description | IL2-inducible T-cell kinase |
| Omim ID | 186973 |
| Gene Ontology | Hyperlink |
| Gene Summary | This gene encodes an intracellular tyrosine kinase expressed in T-cells. The protein contains both SH2 and SH3 domains which are often found in intracellular kinases. It is thought to play a role in T-cell proliferation and differentiation. [provided by RefSeq] |
| Other Designations | homolog of mouse T-cell itk/tsk tyrosine-protein kinase ITK/TSK tyrosine-protein kinase LYK |

Pathway

- [Chemokine signaling pathway](#)
- [Leukocyte transendothelial migration](#)
- [T cell receptor signaling pathway](#)

Disease

- [Asthma](#)
- [Celiac Disease](#)
- [Eczema](#)
- [Genetic Predisposition to Disease](#)
- [Hypersensitivity](#)