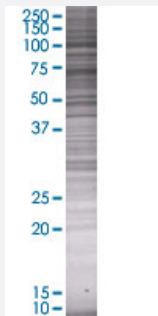


ITGB8 293T Cell Transient Overexpression Lysate(Denatured)

Catalog # H00003696-T01

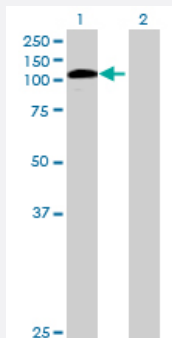
Size 100 uL

Applications



SDS-PAGE Gel

ITGB8 transfected lysate.



Western Blot

Lane 1: ITGB8 transfected lysate (84.7 KDa)

Lane 2: Non-transfected lysate.

Specification

Transfected Cell Line 293T

Plasmid pCMV-ITGB8 full-length

Host Human

Theoretical MW (kDa) 84.7

Quality Control Testing Transient overexpression cell lysate was tested with Anti-ITGB8 antibody ([H00003696-B01](#)) by Western Blots.
SDS-PAGE Gel
ITGB8 transfected lysate.
Western Blot
Lane 1: ITGB8 transfected lysate (84.7 KDa)
Lane 2: Non-transfected lysate.

Storage Buffer

1X Sample Buffer (50 mM Tris-HCl, 2% SDS, 10% glycerol, 300 mM 2-mercaptoethanol, 0.01% Bromophenol blue)

Storage Instruction

Store at -80°C. Aliquot to avoid repeated freezing and thawing.

Applications

- Western Blot

Gene Info — ITGB8

Entrez GeneID[3696](#)**GeneBank Accession#**[NM_002214](#)**Protein Accession#**[NP_002205](#)**Gene Name**

ITGB8

Gene Alias

-

Gene Description

integrin, beta 8

Omim ID[604160](#)**Gene Ontology**[Hyperlink](#)**Gene Summary**

This gene is a member of the integrin beta chain family and encodes a single-pass type I membrane protein with a VWFA domain and four cysteine-rich repeats. This protein noncovalently binds to an alpha subunit to form a heterodimeric integrin complex. In general, integrin complexes mediate cell-cell and cell-extracellular matrix interactions and this complex plays a role in human airway epithelial proliferation. Alternatively spliced variants which encode different protein isoforms have been described; however, not all variants have been fully characterized. [provided by RefSeq]

Other Designations

-

Pathway

- [Arrhythmogenic right ventricular cardiomyopathy \(ARVC\)](#)
- [Cell adhesion molecules \(CAMs\)](#)
- [ECM-receptor interaction](#)

- [Focal adhesion](#)
- [Hypertrophic cardiomyopathy \(HCM\)](#)
- [Regulation of actin cytoskeleton](#)

Disease

- [Tobacco Use Disorder](#)