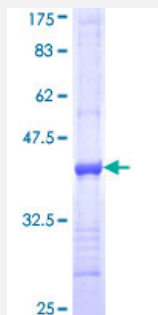


ITGA7 (Human) Recombinant Protein (Q01)

Catalog # H00003679-Q01

Size 25 ug, 10 ug

Applications



Specification

Product Description	Human ITGA7 partial ORF (NP_002197, 478 a.a. - 577 a.a.) recombinant protein with GST-tag at N-terminal.
Sequence	SHEVSIAPRSIDLEQPNCAAGHSCVCDLRVCFSYIAPSSYSPTVALDYVLDADTDRRLRGQVPR VTFLSRNLEEPKHQASGTVWLKHQHDRVCGDAMFQ
Host	Wheat Germ (in vitro)
Theoretical MW (kDa)	36.74
Interspecies Antigen Sequence	Mouse (77); Rat (73)
Preparation Method	in vitro wheat germ expression system
Purification	Glutathione Sepharose 4 Fast Flow
Quality Control Testing	12.5% SDS-PAGE Stained with Coomassie Blue.
Storage Buffer	50 mM Tris-HCl, 10 mM reduced Glutathione, pH=8.0 in the elution buffer.
Storage Instruction	Store at -80°C. Aliquot to avoid repeated freezing and thawing.
Note	Best use within three months from the date of receipt of this protein.

Applications

- Enzyme-linked Immunoabsorbent Assay
- Western Blot (Recombinant protein)
- Antibody Production
- Protein Array

Gene Info — ITGA7

Entrez GeneID [3679](#)

GeneBank Accession# [NM_002206](#)

Protein Accession# [NP_002197](#)

Gene Name ITGA7

Gene Alias FLJ25220

Gene Description integrin, alpha 7

Omim ID [600536](#)

Gene Ontology [Hyperlink](#)

Gene Summary The protein encoded by this gene belongs to the integrin alpha chain family. Integrins are heterodimeric integral membrane proteins composed of an alpha chain and a beta chain. They mediate a wide spectrum of cell-cell and cell-matrix interactions, and thus play a role in cell migration, morphologic development, differentiation, and metastasis. This protein functions as a receptor for the basement membrane protein laminin-1. It is mainly expressed in skeletal and cardiac muscles and may be involved in differentiation and migration processes during myogenesis. Defects in this gene are associated with congenital myopathy. Alternatively spliced transcript variants encoding different isoforms have been noted for this gene. [provided by RefSeq]

Other Designations integrin alpha 7|integrin alpha 7 chain

Pathway

- [Arrhythmogenic right ventricular cardiomyopathy \(ARVC\)](#)
- [ECM-receptor interaction](#)

- [Focal adhesion](#)
- [Hypertrophic cardiomyopathy \(HCM\)](#)
- [Regulation of actin cytoskeleton](#)

Disease

- [Adenocarcinoma](#)
- [Esophageal Neoplasms](#)