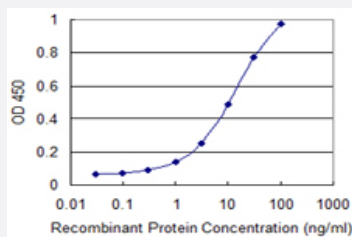


# ITGA7 monoclonal antibody (M02), clone 1F4

Catalog # H00003679-M02

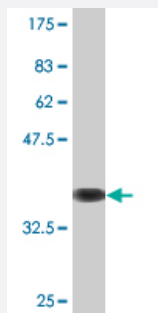
Size 100 ug

## Applications



### Sandwich ELISA (Recombinant protein)

Detection limit for recombinant GST tagged ITGA7 is 0.3 ng/ml as a capture antibody.



Western Blot detection against Immunogen (36.74 KDa) .

## Specification

### Product Description

Mouse monoclonal antibody raised against a partial recombinant ITGA7.

### Immunogen

ITGA7 (NP\_002197, 478 a.a. ~ 577 a.a) partial recombinant protein with GST tag. MW of the GST tag alone is 26 KDa.

### Sequence

SHEVSIAPRSIDLEQPNCAAGHSVCVDLRVCFSYIAVPSSYSPTVALDYVLDADTDRRLRGQVPR  
VTFLSRNLEEPKHQASGTWVLKHQHDRVCGDAMFQ

### Host

Mouse

### Reactivity

Human

Interspecies Antigen Sequence	Mouse (77); Rat (73)
Isotype	IgG1 Kappa
Quality Control Testing	Antibody Reactive Against Recombinant Protein. Western Blot detection against Immunogen (36.74 KDa) .
Storage Buffer	In 1x PBS, pH 7.4
Storage Instruction	Store at -20°C or lower. Aliquot to avoid repeated freezing and thawing.

## Applications

- Western Blot (Recombinant protein)

[Protocol Download](#)

- Sandwich ELISA (Recombinant protein)

Detection limit for recombinant GST tagged ITGA7 is 0.3 ng/ml as a capture antibody.

[Protocol Download](#)

- ELISA

## Gene Info — ITGA7

Entrez GeneID	<a href="#">3679</a>
GeneBank Accession#	<a href="#">NM_002206</a>
Protein Accession#	<a href="#">NP_002197</a>
Gene Name	ITGA7
Gene Alias	FLJ25220
Gene Description	integrin, alpha 7
Omim ID	<a href="#">600536</a>
Gene Ontology	<a href="#">Hyperlink</a>

**Gene Summary**

The protein encoded by this gene belongs to the integrin alpha chain family. Integrins are heterodimeric integral membrane proteins composed of an alpha chain and a beta chain. They mediate a wide spectrum of cell-cell and cell-matrix interactions, and thus play a role in cell migration, morphologic development, differentiation, and metastasis. This protein functions as a receptor for the basement membrane protein laminin-1. It is mainly expressed in skeletal and cardiac muscles and may be involved in differentiation and migration processes during myogenesis. Defects in this gene are associated with congenital myopathy. Alternatively spliced transcript variants encoding different isoforms have been noted for this gene. [provided by RefSeq]

**Other Designations**

integrin alpha 7|integrin alpha 7 chain

**Pathway**

- [Arrhythmogenic right ventricular cardiomyopathy \(ARVC\)](#)
- [ECM-receptor interaction](#)
- [Focal adhesion](#)
- [Hypertrophic cardiomyopathy \(HCM\)](#)
- [Regulation of actin cytoskeleton](#)

**Disease**

- [Adenocarcinoma](#)
- [Esophageal Neoplasms](#)