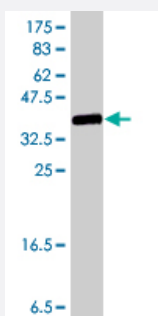


ITGA7 polyclonal antibody (A01)

Catalog # H00003679-A01

Size 50 uL

Applications



Western Blot detection against Immunogen (37.11 KDa) .

Specification

Product Description	Mouse polyclonal antibody raised against a partial recombinant ITGA7.
Immunogen	ITGA7 (NP_002197, 478 a.a. ~ 577 a.a) partial recombinant protein with GST tag.
Sequence	SHEVSIAPRSIDLEQPNCAAGHSCVVDLRVCFSYIAPSSYSPTVALDYVLDADTDRRLRGQVPR VTFLSRNLEEPKHQASGTVWLKHQHDRVCGDAMFQ
Host	Mouse
Reactivity	Human
Interspecies Antigen Sequence	Mouse (77); Rat (73)
Quality Control Testing	Antibody Reactive Against Recombinant Protein. Western Blot detection against Immunogen (37.11 KDa) .
Storage Buffer	50 % glycerol
Storage Instruction	Store at -20°C or lower. Aliquot to avoid repeated freezing and thawing.

Applications

- Western Blot (Recombinant protein)

[Protocol Download](#)

- ELISA

Gene Info — ITGA7

Entrez GeneID [3679](#)

GeneBank Accession# [NM_002206](#)

Protein Accession# [NP_002197](#)

Gene Name ITGA7

Gene Alias FLJ25220

Gene Description integrin, alpha 7

Omim ID [600536](#)

Gene Ontology [Hyperlink](#)

Gene Summary

The protein encoded by this gene belongs to the integrin alpha chain family. Integrins are heterodimeric integral membrane proteins composed of an alpha chain and a beta chain. They mediate a wide spectrum of cell-cell and cell-matrix interactions, and thus play a role in cell migration, morphologic development, differentiation, and metastasis. This protein functions as a receptor for the basement membrane protein laminin-1. It is mainly expressed in skeletal and cardiac muscles and may be involved in differentiation and migration processes during myogenesis. Defects in this gene are associated with congenital myopathy. Alternatively spliced transcript variants encoding different isoforms have been noted for this gene. [provided by RefSeq]

Other Designations integrin alpha 7|integrin alpha 7 chain

Pathway

- [Arrhythmogenic right ventricular cardiomyopathy \(ARVC\)](#)
- [ECM-receptor interaction](#)
- [Focal adhesion](#)
- [Hypertrophic cardiomyopathy \(HCM\)](#)
- [Regulation of actin cytoskeleton](#)

Disease

- [Adenocarcinoma](#)
- [Esophageal Neoplasms](#)