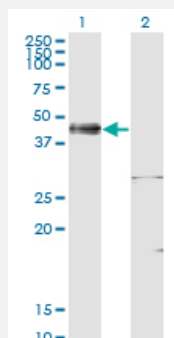


# ISL1 monoclonal antibody (M02), clone 4A7

Catalog # H00003670-M02

Size 100 ug

## Applications

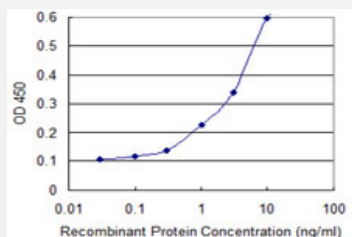


### Western Blot (Transfected lysate)

Western Blot analysis of ISL1 expression in transfected 293T cell line by ISL1 monoclonal antibody (M02), clone 4A7.

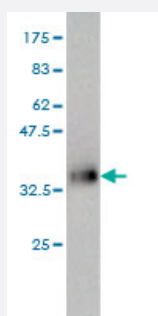
Lane 1: ISL1 transfected lysate (38.7 KDa).

Lane 2: Non-transfected lysate.



### Sandwich ELISA (Recombinant protein)

Detection limit for recombinant GST tagged ISL1 is 0.1 ng/ml as a capture antibody.



Western Blot detection against Immunogen (36.41 KDa) .

## Specification

### Product Description

Mouse monoclonal antibody raised against a partial recombinant ISL1.

<b>Immunogen</b>	ISL1 (NP_002193, 63 a.a. ~ 159 a.a) partial recombinant protein with GST tag. MW of the GST tag alone is 26 KDa.
<b>Sequence</b>	YCKRDYIRLYGIKCAKCSIGFSKNDFVMRARSKVYHIECFRCVACSRQLIPGDEFALREDGLFCRA DHDVVERASLGAGDPLSPLHPARPLQMAAEP
<b>Host</b>	Mouse
<b>Reactivity</b>	Human
<b>Isotype</b>	IgG2b Kappa
<b>Quality Control Testing</b>	Antibody Reactive Against Recombinant Protein. Western Blot detection against Immunogen (36.41 KDa) .
<b>Storage Buffer</b>	In 1x PBS, pH 7.4
<b>Storage Instruction</b>	Store at -20°C or lower. Aliquot to avoid repeated freezing and thawing.

## Applications

- Western Blot (Transfected lysate)

Western Blot analysis of ISL1 expression in transfected 293T cell line by ISL1 monoclonal antibody (M02), clone 4A7.

Lane 1: ISL1 transfected lysate(38.7 KDa).

Lane 2: Non-transfected lysate.

[Protocol Download](#)

- Western Blot (Recombinant protein)

[Protocol Download](#)

- Sandwich ELISA (Recombinant protein)

Detection limit for recombinant GST tagged ISL1 is 0.1 ng/ml as a capture antibody.

[Protocol Download](#)

- ELISA

## Gene Info — ISL1

Entrez GeneID [3670](#)

GeneBank Accession# [NM\\_002202](#)

Protein Accession#	<a href="#">NP_002193</a>
Gene Name	ISL1
Gene Alias	Isl-1
Gene Description	ISL LIM homeobox 1
Omim ID	<a href="#">600366</a>
Gene Ontology	<a href="#">Hyperlink</a>
Gene Summary	<p>This gene encodes a member of the LIM/homeodomain family of transcription factors. The encoded protein binds to the enhancer region of the insulin gene, among others, and may play an important role in regulating insulin gene expression. The encoded protein is central to the development of pancreatic cell lineages and may also be required for motor neuron generation. Mutations in this gene have been associated with maturity-onset diabetes of the young. [provided by RefSeq]</p>
Other Designations	ISL1 transcription factor, LIM/homeodomain islet-1

## Disease

- [Attention Deficit Disorder with Hyperactivity](#)
- [Diabetes Mellitus](#)
- [Genetic Predisposition to Disease](#)
- [Heart Defects](#)
- [Tourette Syndrome](#)