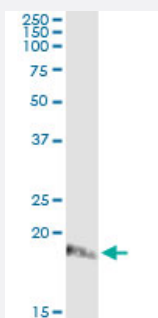


# ISG20 (Human) IP-WB Antibody Pair

Catalog # H00003669-PW2

Size 1 Set

## Applications



Immunoprecipitation of ISG20 transfected lysate using mouse monoclonal anti-ISG20 and Protein A Magnetic Bead ([U0007](#)), and immunoblotted with rabbit polyclonal anti-ISG20.

## Specification

<b>Product Description</b>	This IP-WB antibody pair set comes with one antibody for immunoprecipitation and another to detect the precipitated protein in western blot.
<b>Reactivity</b>	Human
<b>Quality Control Testing</b>	Immunoprecipitation-Western Blot (IP-WB) Immunoprecipitation of ISG20 transfected lysate using mouse monoclonal anti-ISG20 and Protein A Magnetic Bead ( <a href="#">U0007</a> ), and immunoblotted with rabbit polyclonal anti-ISG20.
<b>Supplied Product</b>	Antibody pair set content: 1. Antibody pair for IP: mouse monoclonal anti-ISG20 (300 ug) 2. Antibody pair for WB: rabbit polyclonal anti-ISG20 (50 ul)
<b>Storage Instruction</b>	Store reagents of the antibody pair set at -20°C or lower. Please aliquot to avoid repeated freeze thaw cycle. Reagents should be returned to -20°C storage immediately after use.

## Applications

- Immunoprecipitation-Western Blot

[Protocol Download](#)

## Gene Info — ISG20

**Entrez GeneID** [3669](#)**Gene Name** ISG20**Gene Alias** CD25, HEM45**Gene Description** interferon stimulated exonuclease gene 20kDa**Omim ID** [604533](#)**Gene Ontology** [Hyperlink](#)**Other Designations** interferon stimulated exonuclease|interferon stimulated gene 20kDa