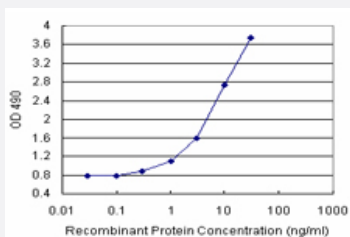


ISG20 (Human) Matched Antibody Pair

Catalog # H00003669-AP21

Size 1 Set

Applications



Sandwich ELISA detection sensitivity ranging from 0.3 ng/ml to 100 ng/ml.

Specification

Product Description	This antibody pair set comes with a matched antibody pair to detect and quantify the protein level of human ISG20.
Reactivity	Human
Quality Control Testing	Standard curve using recombinant protein (H00003669-P01) as an analyte. Sandwich ELISA detection sensitivity ranging from 0.3 ng/ml to 100 ng/ml.
Supplied Product	Antibody pair set content: 1. Capture antibody: rabbit MaxPab® affinity purified polyclonal anti-ISG20 (100 ug) 2. Detection antibody: mouse purified polyclonal anti-ISG20 (20 ug) *Reagents are sufficient for at least 1-2 x 96 well plates using recommended protocols.
Storage Instruction	Store reagents of the antibody pair set at -20°C or lower. Please aliquot to avoid repeated freeze thaw cycle. Reagents should be returned to -20°C storage immediately after use.

Applications

- ELISA Pair (Recombinant protein)

[Protocol Download](#)

Gene Info — ISG20

Entrez GeneID [3669](#)**Gene Name** ISG20**Gene Alias** CD25, HEM45**Gene Description** interferon stimulated exonuclease gene 20kDa**Omim ID** [604533](#)**Gene Ontology** [Hyperlink](#)**Other Designations** interferon stimulated exonuclease|interferon stimulated gene 20kDa