

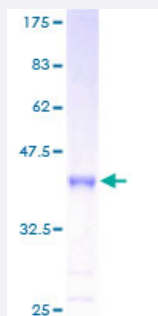
Full-Length

INSL4 (Human) Recombinant Protein (P01)

Catalog # H00003641-P01

Size 25 ug, 10 ug

Applications



Specification

Product Description	Human INSL4 full-length ORF (AAH26254, 26 a.a. - 139 a.a.) recombinant protein with GST-tag at N-terminal.
Sequence	AELRGCGPRFGKHLLSYCPMPEKTFTTTPGGWLLESGRPKEMVSTSNKDGQALGTTSEFIPNL SPELKKPLSEGQPSLKKILSRKKRSGRHRFDPFCCCEVICDDGTSVKLCT
Host	Wheat Germ (in vitro)
Theoretical MW (kDa)	38.28
Preparation Method	in vitro wheat germ expression system
Purification	Glutathione Sepharose 4 Fast Flow
Quality Control Testing	12.5% SDS-PAGE Stained with Coomassie Blue.
Storage Buffer	50 mM Tris-HCl, 10 mM reduced Glutathione, pH=8.0 in the elution buffer.
Storage Instruction	Store at -80°C. Aliquot to avoid repeated freezing and thawing.
Note	Best use within three months from the date of receipt of this protein.

Applications

- Enzyme-linked Immunoabsorbent Assay
- Western Blot (Recombinant protein)
- Antibody Production
- Protein Array

Gene Info — INSL4

Entrez GeneID	3641
GeneBank Accession#	BC026254
Protein Accession#	AAH26254
Gene Name	INSL4
Gene Alias	EPIL, PLACENTIN
Gene Description	insulin-like 4 (placenta)
Omim ID	600910
Gene Ontology	Hyperlink
Gene Summary	INSL4 encodes the insulin-like 4 protein, a member of the insulin superfamily. INSL4 encodes a precursor that undergoes post-translational cleavage to produce 3 polypeptide chains, A-C, that form tertiary structures composed of either all three chains, or just the A and B chains. Expression of INSL4 products occurs within the early placental cytotrophoblast and syncytiotrophoblast. [provided by RefSeq]
Other Designations	OTTHUMP00000021025 early placenta insulin-like peptide (EPIL) insulin-like 4