

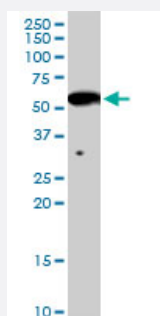
MaxPab®

INHBB purified MaxPab rabbit polyclonal antibody (D01P)

Catalog # H00003625-D01P

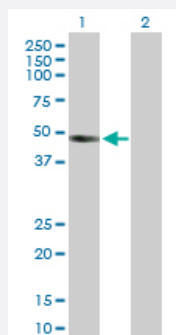
Size 100 ug

Applications



Western Blot (Tissue lysate)

INHBB MaxPab rabbit polyclonal antibody. Western Blot analysis of INHBB expression in mouse brain.

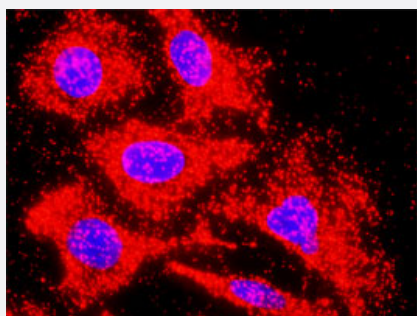


Western Blot (Transfected lysate)

Western Blot analysis of INHBB expression in transfected 293T cell line ([H00003625-T02](#)) by INHBB MaxPab polyclonal antibody.

Lane 1: INHBB transfected lysate(45.20 KDa).

Lane 2: Non-transfected lysate.



In situ Proximity Ligation Assay (Cell)

Proximity Ligation Analysis of protein-protein interactions between INHBB and ACVR1C. HeLa cells were stained with anti-INHBB rabbit purified polyclonal 1:1200 and anti-ACVR1C mouse monoclonal antibody 1:50. Each red dot represents the detection of protein-protein interaction complex, and nuclei were counterstained with DAPI (blue).

Specification

Product Description

Rabbit polyclonal antibody raised against a full-length human INHBB protein.

Immunogen	INHBB (AAH30029.1, 1 a.a. ~ 407 a.a) full-length human protein.
Sequence	MDGLPGRALGAACLLLLAAGWLGPEAWGSPTTPPTPAAQPPPPPPGSPGGSQDTCTSCGGFR RPEELGRVDGDFLEAVKRHLSRLQMRGRPNITHAVPKAAMVTALRKLHAGKVREDGRVEIPHL GHASPGADGQERVSEIISFAETDGLASSRVRLYFFISNEGNQNLFFVQASLWLYLKLLPYVLEKGS RRKVRVKVYFQEQGHGDRWNMVEKRVDLKRSGWHTFPLTEAIQALFERGERRLNLDVQCDSCQ ELAVVPVFVDPGEESHVPFVVQARLGDSRHRIRKRGLECDGRTNLCCRQQFFIDFRLIGWNDWI IAPTSYGYNYCEGSCPAYLAGVPGSASSFHTAVVNQYRMRGLNPGTVNSCCIPTKLSTMSMLYFD DEYNIVKRDVPNMIVEECGCA
Host	Rabbit
Reactivity	Human, Mouse
Interspecies Antigen Sequence	Mouse (96); Rat (96)
Quality Control Testing	Antibody reactive against mammalian transfected lysate.
Storage Buffer	In 1x PBS, pH 7.4
Storage Instruction	Store at -20°C or lower. Aliquot to avoid repeated freezing and thawing.

Applications

- Western Blot (Tissue lysate)

INHBB MaxPab rabbit polyclonal antibody. Western Blot analysis of INHBB expression in mouse brain.

[Protocol Download](#)

- Western Blot (Transfected lysate)

Western Blot analysis of INHBB expression in transfected 293T cell line ([H00003625-T02](#)) by INHBB MaxPab polyclonal antibody.

Lane 1: INHBB transfected lysate(45.20 KDa).

Lane 2: Non-transfected lysate.

[Protocol Download](#)

- In situ* Proximity Ligation Assay (Cell)

Proximity Ligation Analysis of protein-protein interactions between INHBB and ACVR1C. HeLa cells were stained with anti-INHBB rabbit purified polyclonal 1:1200 and anti-ACVR1C mouse monoclonal antibody 1:50. Each red dot represents the detection of protein-protein interaction complex, and nuclei were counterstained with DAPI (blue).

Gene Info — INHBB

Entrez GeneID	3625
GeneBank Accession#	BC030029
Protein Accession#	AAH30029.1
Gene Name	INHBB
Gene Alias	MGC157939
Gene Description	inhibin, beta B
Omim ID	147390
Gene Ontology	Hyperlink
Gene Summary	<p>The inhibin beta B subunit joins the alpha subunit to form a pituitary FSH secretion inhibitor. Inhibin has been shown to regulate gonadal stromal cell proliferation negatively and to have tumour-suppressor activity. In addition, serum levels of inhibin have been shown to reflect the size of granulosa-cell tumors and can therefore be used as a marker for primary as well as recurrent disease. Because expression in gonadal and various extragonadal tissues may vary severalfold in a tissue-specific fashion, it is proposed that inhibin may be both a growth/differentiation factor and a hormone. Furthermore, the beta B subunit forms a homodimer, activin B, and also joins with the beta A subunit to form a heterodimer, activin AB, both of which stimulate FSH secretion. [provided by RefSeq]</p>
Other Designations	Inhibin, beta-2 activin AB beta polypeptide inhibin beta B subunit

Pathway

- [Cytokine-cytokine receptor interaction](#)
- [TGF-beta signaling pathway](#)

Disease

- [Breast Neoplasms](#)
- [Cleft Lip](#)
- [Cleft Palate](#)
- [Disease Models](#)
- [Genetic Predisposition to Disease](#)

- [Neoplasms](#)
- [Obesity](#)
- [Ovarian cancer](#)
- [Ovarian Failure](#)
- [Ovarian Neoplasms](#)
- [Polycystic Ovary Syndrome](#)
- [Prostate cancer](#)
- [Prostatic Neoplasms](#)
- [Puberty](#)
- [Testicular Neoplasms](#)
- [Thrombophilia](#)
- [Tobacco Use Disorder](#)