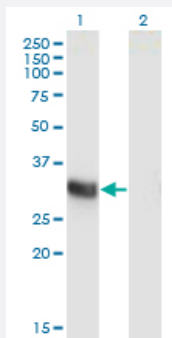


ING2 monoclonal antibody (M05), clone 1D1

Catalog # H00003622-M05

Size 100 ug

Applications

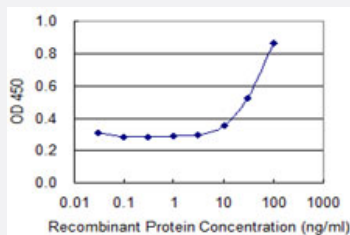


Western Blot (Transfected lysate)

Western Blot analysis of ING2 expression in transfected 293T cell line by ING2 monoclonal antibody (M05), clone 1D1.

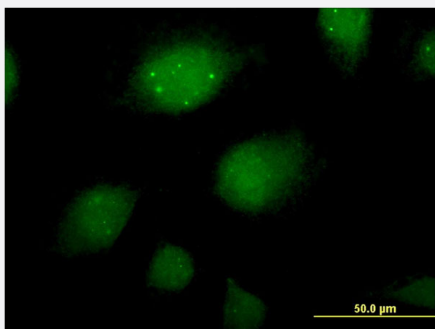
Lane 1: ING2 transfected lysate (Predicted MW: 32.8 KDa).

Lane 2: Non-transfected lysate.



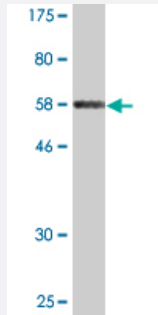
Sandwich ELISA (Recombinant protein)

Detection limit for recombinant GST tagged ING2 is 3 ng/ml as a capture antibody.



Immunofluorescence

Immunofluorescence of monoclonal antibody to ING2 on HeLa cell . [antibody concentration 10 ug/ml]



Western Blot detection against Immunogen (56.54 KDa) .

Specification

Product Description	Mouse monoclonal antibody raised against a full-length recombinant ING2.
Immunogen	ING2 (AAH30128, 1 a.a. ~ 280 a.a) full-length recombinant protein with GST tag. MW of the GST tag alone is 26 KDa.
Sequence	MLGQQQQQLYSSAALLTGERSRLLCYVQDYLECVELPHDMQRNVSVLRELDNKYQETLKEIDD VYEKYKKEDDLNQKKRLQQLLQRALINSQELGDEKIQVTQMELVENRARQMELHSQCFQDPAE SERASDKAKMDSSQPERSSRRPRRQRTSESRLCHMANGIEDCDDQPPKEKKSKSAKKKKRS KAKQEREASPVFAIDPNEPTYCLCNQVSYGEMIGCDNEQCPIEWFHFSCVSLTYKPKGKWWYCP KCRGDNEKTMGKSTEKTKKDRRSR
Host	Mouse
Reactivity	Human
Interspecies Antigen Sequence	Mouse (96); Rat (96)
Isotype	IgG2a Kappa
Quality Control Testing	Antibody Reactive Against Recombinant Protein. Western Blot detection against Immunogen (56.54 KDa) .
Storage Buffer	In 1x PBS, pH 7.4
Storage Instruction	Store at -20°C or lower. Aliquot to avoid repeated freezing and thawing.

Applications

- Western Blot (Transfected lysate)

Western Blot analysis of ING2 expression in transfected 293T cell line by ING2 monoclonal antibody (M05), clone 1D1.

Lane 1: ING2 transfected lysate (Predicted MW: 32.8 KDa).

Lane 2: Non-transfected lysate.

[Protocol Download](#)

- Western Blot (Recombinant protein)

[Protocol Download](#)

- Sandwich ELISA (Recombinant protein)

Detection limit for recombinant GST tagged ING2 is 3 ng/ml as a capture antibody.

[Protocol Download](#)

- ELISA

- Immunofluorescence

Immunofluorescence of monoclonal antibody to ING2 on HeLa cell . [antibody concentration 10 ug/ml]

Gene Info — ING2

Entrez GeneID [3622](#)

GeneBank Accession# [BC030128](#)

Protein Accession# [AAH30128](#)

Gene Name ING2

Gene Alias ING1L, p33ING2

Gene Description inhibitor of growth family, member 2

Omim ID [604215](#)

Gene Ontology [Hyperlink](#)

Gene Summary This gene is a member of the inhibitor of growth (ING) family. Members of the ING family associate with and modulate the activity of histone acetyltransferase (HAT) and histone deacetylase (HDAC) complexes and function in DNA repair and apoptosis. [provided by RefSeq]

Other Designations inhibitor of growth 1-like|inhibitor of growth family, member 1-like