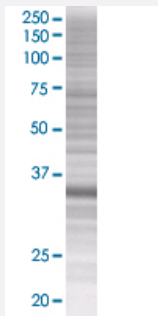


ING1 293T Cell Transient Overexpression Lysate(Denatured)

Catalog # H00003621-T01

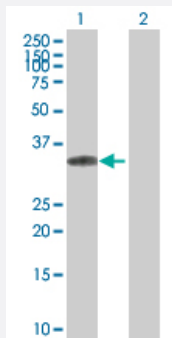
Size 100 uL

Applications



SDS-PAGE Gel

ING1 transfected lysate.



Western Blot

Lane 1: ING1 transfected lysate (11.11 KDa)

Lane 2: Non-transfected lysate.

Specification

Transfected Cell Line	293T
Plasmid	pCMV-ING1 full-length
Host	Human
Theoretical MW (kDa)	30.8
Interspecies Antigen Sequence	Mouse (90); Rat (89)

Quality Control Testing

Transient overexpression cell lysate was tested with Anti-ING1 antibody ([H00003621-B01](#)) by Western Blots.
 SDS-PAGE Gel
 ING1 transfected lysate.
 Western Blot
 Lane 1: ING1 transfected lysate (11.11 KDa)
 Lane 2: Non-transfected lysate.

Storage Buffer

1X Sample Buffer (50 mM Tris-HCl, 2% SDS, 10% glycerol, 300 mM 2-mercaptoethanol, 0.01% Bromophenol blue)

Storage Instruction

Store at -80°C. Aliquot to avoid repeated freezing and thawing.

Applications

- Western Blot

Gene Info — ING1

Entrez GeneID

[3621](#)

GeneBank Accession#

[NM_198219](#)

Protein Accession#

[NP_937862](#)

Gene Name

ING1

Gene Alias

p24ING1c, p33, p33ING1, p33ING1b, p47, p47ING1a

Gene Description

inhibitor of growth family, member 1

Omim ID

[275355 601566](#)

Gene Ontology

[Hyperlink](#)

Gene Summary

This gene encodes a tumor suppressor protein that can induce cell growth arrest and apoptosis. The encoded protein is a nuclear protein that physically interacts with the tumor suppressor protein TP53 and is a component of the p53 signaling pathway. Reduced expression and rearrangement of this gene have been detected in various cancers. Multiple alternatively spliced transcript variants encoding distinct isoforms have been reported. [provided by RefSeq]

Other Designations

OTTHUMP00000018703|OTTHUMP00000018704|OTTHUMP00000018705|OTTHUMP00000018706|growth inhibitor ING1|growth inhibitory protein ING1|inhibitor of growth 1|tumor suppressor ING1

Disease

- [Alzheimer disease](#)
- [Colorectal Neoplasms](#)