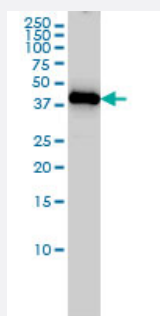


ING1 monoclonal antibody (M05), clone 2F9

Catalog # H00003621-M05

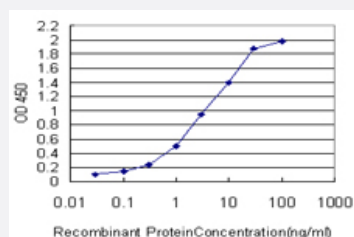
Size 50 ug

Applications



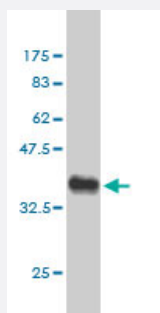
Western Blot (Cell lysate)

ING1 monoclonal antibody (M05), clone 2F9 Western Blot analysis of ING1 expression in MCF-7 (Cat # L046V1).



Sandwich ELISA (Recombinant protein)

Detection limit for recombinant GST tagged ING1 is approximately 0.1ng/ml as a capture antibody.



Western Blot detection against Immunogen (36.74 KDa) .

Specification

Product Description

Mouse monoclonal antibody raised against a partial recombinant ING1.

| | |
|--------------------------------------|--|
| Immunogen | ING1 (NP_937862.1, 41 a.a. ~ 140 a.a) partial recombinant protein with GST tag. MW of the GST tag alone is 26 KDa. |
| Sequence | DAKYQEILKELDECYERFSRET DGAQKRRMLHCVQRALIRSQELGDEKIQIVSQMVVELVENRTRQVDSHVELFEAQQELGDTAGNSGKAGADRPKGEEAA |
| Host | Mouse |
| Reactivity | Human |
| Interspecies Antigen Sequence | Mouse (81); Rat (79) |
| Isotype | IgM Kappa |
| Quality Control Testing | Antibody Reactive Against Recombinant Protein. Western Blot detection against Immunogen (36.74 KDa) . |
| Storage Buffer | In 1x PBS, pH 7.4 |
| Storage Instruction | Store at -20°C or lower. Aliquot to avoid repeated freezing and thawing. |

Applications

- Western Blot (Cell lysate)

ING1 monoclonal antibody (M05), clone 2F9 Western Blot analysis of ING1 expression in MCF-7 (Cat # L046V1).

[Protocol Download](#)

- Western Blot (Recombinant protein)

[Protocol Download](#)

- Sandwich ELISA (Recombinant protein)

Detection limit for recombinant GST tagged ING1 is approximately 0.1ng/ml as a capture antibody.

[Protocol Download](#)

- ELISA

Gene Info — ING1

Entrez GeneID [3621](#)

| | |
|---------------------|---|
| GeneBank Accession# | NM_198219.1 |
| Protein Accession# | NP_937862.1 |
| Gene Name | ING1 |
| Gene Alias | p24ING1c, p33, p33ING1, p33ING1b, p47, p47ING1a |
| Gene Description | inhibitor of growth family, member 1 |
| Omim ID | 275355 601566 |
| Gene Ontology | Hyperlink |
| Gene Summary | This gene encodes a tumor suppressor protein that can induce cell growth arrest and apoptosis. The encoded protein is a nuclear protein that physically interacts with the tumor suppressor protein TP53 and is a component of the p53 signaling pathway. Reduced expression and rearrangement of this gene have been detected in various cancers. Multiple alternatively spliced transcript variants encoding distinct isoforms have been reported. [provided by RefSeq] |
| Other Designations | OTTHUMP00000018703 OTTHUMP00000018704 OTTHUMP00000018705 OTTHUMP00000018706 growth inhibitor ING1 growth inhibitory protein ING1 inhibitor of growth 1 tumor suppressor ING1 |

Disease

- [Alzheimer disease](#)
- [Colorectal Neoplasms](#)