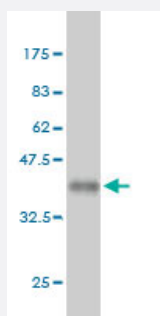


# ING1 monoclonal antibody (M03), clone 1C11

Catalog # H00003621-M03

Size 100 ug

## Applications



Western Blot detection against Immunogen (36.74 KDa) .

## Specification

<b>Product Description</b>	Mouse monoclonal antibody raised against a partial recombinant ING1.
<b>Immunogen</b>	ING1 (NP_937862.1, 41 a.a. ~ 140 a.a) partial recombinant protein with GST tag. MW of the GST tag alone is 26 KDa.
<b>Sequence</b>	DAKYQEILKELDECYERFSRETDGAQKRRMLHCVQRALIRSQELGDEKIQVISMVELVENRTRQVDSHVELFEAQQELGDTAGNSGKAGADRPKGEEAA
<b>Host</b>	Mouse
<b>Reactivity</b>	Human
<b>Interspecies Antigen Sequence</b>	Mouse (81); Rat (79)
<b>Isotype</b>	IgG1 kappa
<b>Quality Control Testing</b>	Antibody Reactive Against Recombinant Protein. Western Blot detection against Immunogen (36.74 KDa) .
<b>Storage Buffer</b>	In 1x PBS, pH 7.4
<b>Storage Instruction</b>	Store at -20°C or lower. Aliquot to avoid repeated freezing and thawing.

## Applications

- Western Blot (Recombinant protein)

[Protocol Download](#)

- ELISA

## Gene Info — ING1

Entrez GeneID	<a href="#">3621</a>
GeneBank Accession#	<a href="#">NM_198219.1</a>
Protein Accession#	<a href="#">NP_937862.1</a>
Gene Name	ING1
Gene Alias	p24ING1c, p33, p33ING1, p33ING1b, p47, p47ING1a
Gene Description	inhibitor of growth family, member 1
Omim ID	<a href="#">275355 601566</a>
Gene Ontology	<a href="#">Hyperlink</a>
Gene Summary	This gene encodes a tumor suppressor protein that can induce cell growth arrest and apoptosis. The encoded protein is a nuclear protein that physically interacts with the tumor suppressor protein TP53 and is a component of the p53 signaling pathway. Reduced expression and rearrangement of this gene have been detected in various cancers. Multiple alternatively spliced transcript variants encoding distinct isoforms have been reported. [provided by RefSeq]
Other Designations	OTTHUMP00000018703 OTTHUMP00000018704 OTTHUMP00000018705 OTTHUMP00000018706 growth inhibitor ING1 growth inhibitory protein ING1 inhibitor of growth 1 tumor suppressor ING1

## Disease

- [Alzheimer disease](#)
- [Colorectal Neoplasms](#)