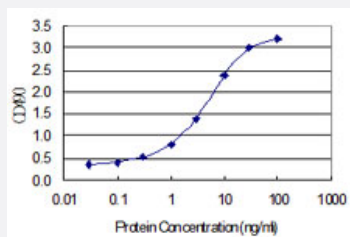


IDO1 (Human) Matched Antibody Pair

Catalog # H00003620-AP22

Size 1 Set

Applications



Sandwich ELISA detection sensitivity ranging from 0.1 ng/ml to 100 ng/ml.

Specification

Product Description	This antibody pair set comes with a matched antibody pair to detect and quantify the protein level of human IDO1.
Reactivity	Human
Quality Control Testing	Standard curve using recombinant protein (H00003620-P01) as an analyte. Sandwich ELISA detection sensitivity ranging from 0.1 ng/ml to 100 ng/ml.
Supplied Product	Antibody pair set content: 1. Capture antibody: rabbit MaxPab® affinity purified polyclonal anti-IDO1 (100 ug) 2. Detection antibody: mouse purified polyclonal anti-IDO1 (20 ug) *Reagents are sufficient for at least 1-2 x 96 well plates using recommended protocols.
Storage Instruction	Store reagents of the antibody pair set at -20°C or lower. Please aliquot to avoid repeated freeze thaw cycle. Reagents should be returned to -20°C storage immediately after use.

Applications

- ELISA Pair (Recombinant protein)

[Protocol Download](#)

Gene Info — IDO1

Entrez GeneID [3620](#)**Gene Name** IDO1**Gene Alias** CD107B, IDO, INDO**Gene Description** indoleamine 2,3-dioxygenase 1**Omim ID** [147435](#)**Gene Ontology** [Hyperlink](#)

Gene Summary Gamma-interferon (IFNG; MIM 147570) has an antiproliferative effect on many tumor cells and inhibits intracellular pathogens such as Toxoplasma and Chlamydia, at least partly because of the induction of indoleamine 2,3-dioxygenase (INDO; EC 1.13.11.52). This enzyme catalyzes the degradation of the essential amino acid L-tryptophan to N-formyl-kynurenine.[supplied by OMIM]

Other Designations indole 2,3-dioxygenase|indoleamine-pyrrole 2,3 dioxygenase

Pathway

- [Metabolic pathways](#)
- [Tryptophan metabolism](#)

Disease

- [Hepatitis C](#)
- [Multiple Sclerosis](#)
- [Pre-Eclampsia](#)