

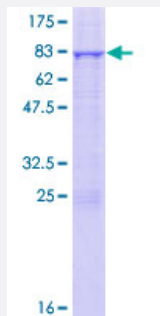
Full-Length

ILK (Human) Recombinant Protein (P01)

Catalog # H00003611-P01

Size 25 ug, 10 ug

Applications



Specification

Product Description

Human ILK full-length ORF (NP_001014794.1, 1 a.a. - 452 a.a.) recombinant protein with GST-tag at N-terminal.

Sequence

MDDIFTQCREGNAVAVRLWLDNTENDLNQGDDHGFSPHLHWACREGRSAVVEMLMRGARINVM
NRGDDTPLHLAASHGHRDIVQKLLQYKADINAVNEHGNVPLHYACFWGQDQVAEDLVANGALVSI
CNKYGEMPVDKAKAPLRELLRERAEKMGQNLNRIPYKDTFWKGTTTRTRPRNGTLNKHSGIDFKQL
NFLTKLNENHSGELWKGRWQGNDIVKVLKVRDWSTRKSRDFNEECPLRIFSHPNVLPVLGAC
QSPPAPHPTLITHWMPYGSLYNLHEGTNFVVDQSQAVKFALDMARGMAFLHTLEPLIPRHALNS
RSVMIDEDMTARISMADVKFSFQCPRMYAPAWVAPEALQKKPEDTNRRSADMWSFAVLLWEL
VTREVPFADLSNMEIGMKVALEGLRPTIPPGISPHVCKLMKICMNEDPAKRPKFDMVPILEKMQD
K

Host

Wheat Germ (in vitro)

Theoretical MW (kDa)

77.8

Preparation Method

[in vitro wheat germ expression system](#)

Purification

Glutathione Sepharose 4 Fast Flow

Quality Control Testing

12.5% SDS-PAGE Stained with Coomassie Blue.

Storage Buffer

50 mM Tris-HCl, 10 mM reduced Glutathione, pH=8.0 in the elution buffer.

Storage Instruction

Store at -80°C. Aliquot to avoid repeated freezing and thawing.

Note

Best use within three months from the date of receipt of this protein.

Applications

- Enzyme-linked Immunoabsorbent Assay
- Western Blot (Recombinant protein)
- Antibody Production
- Protein Array

Gene Info — ILK

Entrez GeneID[3611](#)**GeneBank Accession#**[NM_001014794.1](#)**Protein Accession#**[NP_001014794.1](#)**Gene Name**

ILK

Gene Alias

DKFZp686F1765, P59

Gene Description

integrin-linked kinase

Omim ID[602366](#)**Gene Ontology**[Hyperlink](#)**Gene Summary**

Transduction of extracellular matrix signals through integrins influences intracellular and extracellular functions, and appears to require interaction of integrin cytoplasmic domains with cellular proteins. Integrin-linked kinase (ILK), interacts with the cytoplasmic domain of beta-1 integrin. This gene encodes a serine/threonine protein kinase with 4 ankyrin-like repeats, which associates with the cytoplasmic domain of beta integrins and acts as a proximal receptor kinase regulating integrin-mediated signal transduction. Multiple alternatively spliced transcript variants encoding the same protein have been found for this gene. [provided by RefSeq]

Other Designations

-

Pathway

- [Endometrial cancer](#)
- [Focal adhesion](#)
- [PPAR signaling pathway](#)