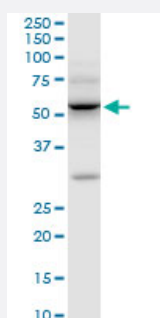


ILK monoclonal antibody (M01), clone 4F10

Catalog # H00003611-M01

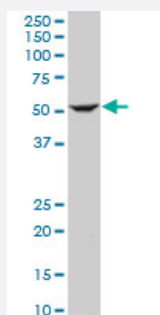
Size 100 ug

Applications



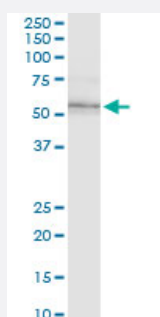
Western Blot (Cell lysate)

ILK monoclonal antibody (M01), clone 4F10. Western Blot analysis of ILK expression in Raw 264.7 (Cat # L024V1).



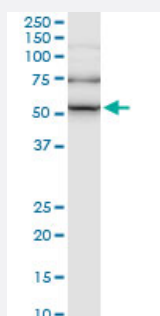
Western Blot (Cell lysate)

ILK monoclonal antibody (M01), clone 4F10. Western Blot analysis of ILK expression in HepG2 (Cat # L019V1).



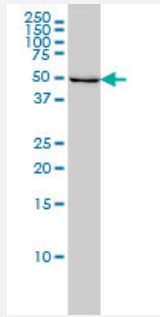
Western Blot (Cell lysate)

ILK monoclonal antibody (M01), clone 4F10. Western Blot analysis of ILK expression in NIH/3T3 (Cat # L018V1).



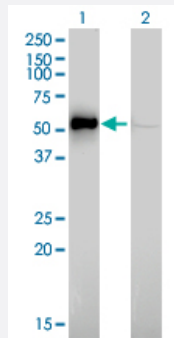
Western Blot (Cell lysate)

ILK monoclonal antibody (M01), clone 4F10. Western Blot analysis of ILK expression in PC-12 (Cat # L012V1).



Western Blot (Cell lysate)

ILK monoclonal antibody (M01), clone 4F10 Western Blot analysis of ILK expression in HeLa (Cat # L013V1).

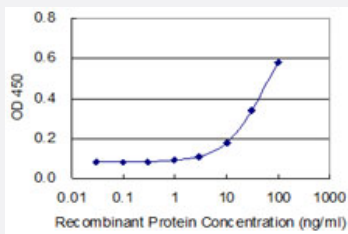


Western Blot (Transfected lysate)

Western Blot analysis of ILK expression in transfected 293T cell line by ILK monoclonal antibody (M01), clone 4F10.

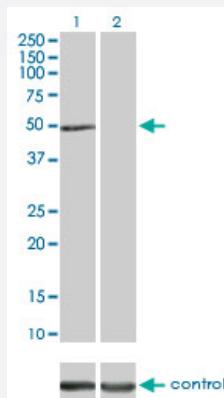
Lane 1: ILK transfected lysate(51.4 KDa).

Lane 2: Non-transfected lysate.



Sandwich ELISA (Recombinant protein)

Detection limit for recombinant GST tagged ILK is approximately 3ng/ml as a capture antibody.

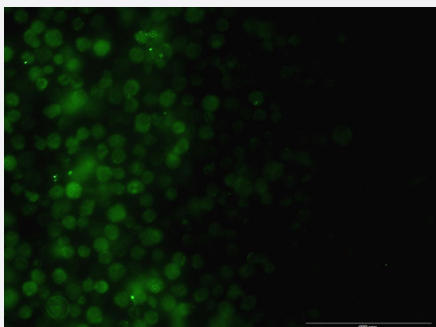


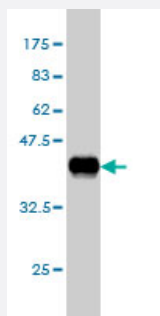
RNAi Knockdown (Antibody validated)

Western blot analysis of ILK over-expressed 293 cell line, cotransfected with ILK Validated Chimera RNAi (Cat # H00003611-R01V) (Lane 2) or non-transfected control (Lane 1). Blot probed with ILK monoclonal antibody (M01) clone 4F10 (Cat # H00003611-M01). GAPDH (36.1 kDa) used as specificity and loading control.

Immunofluorescence

Immunofluorescence of monoclonal antibody to ILK on Jurkat cell . [antibody concentration 10 ug/ml]





Western Blot detection against Immunogen (38.06 KDa) .

Specification

Product Description	Mouse monoclonal antibody raised against a partial recombinant ILK.
Immunogen	ILK (AAH01554, 341 a.a. ~ 452 a.a) partial recombinant protein with GST tag. MW of the GST tag alone is 26 KDa.
Sequence	KFSFQCPGRMYAPAWVAPEALQKKPEDTNRRSADMWSFAVLLWELVTREVPFADLSNMEIGMKVALEGLRPTIPPGISPHVCKLMKICMNEDPAKRPKFDMIVPILEKMQDK
Host	Mouse
Reactivity	Human, Mouse, Rat
Isotype	IgG1 Kappa
Quality Control Testing	Antibody Reactive Against Recombinant Protein. Western Blot detection against Immunogen (38.06 KDa) .
Storage Buffer	In 1x PBS, pH 7.4
Storage Instruction	Store at -20°C or lower. Aliquot to avoid repeated freezing and thawing.

Applications

- Western Blot (Cell lysate)

ILK monoclonal antibody (M01), clone 4F10. Western Blot analysis of ILK expression in Raw 264.7(Cat # L024V1).

[Protocol Download](#)

- Western Blot (Cell lysate)

ILK monoclonal antibody (M01), clone 4F10. Western Blot analysis of ILK expression in HepG2 (Cat # L019V1).

[Protocol Download](#)

- Western Blot (Cell lysate)

ILK monoclonal antibody (M01), clone 4F10. Western Blot analysis of ILK expression in NIH/3T3(Cat # L018V1).

[Protocol Download](#)

- Western Blot (Cell lysate)

ILK monoclonal antibody (M01), clone 4F10. Western Blot analysis of ILK expression in PC-12(Cat # L012V1).

[Protocol Download](#)

- Western Blot (Cell lysate)

ILK monoclonal antibody (M01), clone 4F10 Western Blot analysis of ILK expression in HeLa (Cat # L013V1).

[Protocol Download](#)

- Western Blot (Transfected lysate)

Western Blot analysis of ILK expression in transfected 293T cell line by ILK monoclonal antibody (M01), clone 4F10.

Lane 1: ILK transfected lysate(51.4 KDa).

Lane 2: Non-transfected lysate.

[Protocol Download](#)

- Western Blot (Recombinant protein)

[Protocol Download](#)

- Sandwich ELISA (Recombinant protein)

Detection limit for recombinant GST tagged ILK is approximately 3ng/ml as a capture antibody.

[Protocol Download](#)

- ELISA

- RNAi Knockdown (Antibody validated)

Western blot analysis of ILK over-expressed 293 cell line, cotransfected with ILK Validated Chimera RNAi (Cat # H00003611-R01V) (Lane 2) or non-transfected control (Lane 1). Blot probed with ILK monoclonal antibody (M01) clone 4F10 (Cat # H00003611-M01). GAPDH (36.1 kDa) used as specificity and loading control.

[Protocol Download](#)

- Immunofluorescence

Immunofluorescence of monoclonal antibody to ILK on Jurkat cell . [antibody concentration 10 ug/ml]

Gene Info — ILK

Entrez GeneID [3611](#)

GeneBank Accession# [BC001554](#)

Protein Accession# [AAH01554](#)

Gene Name ILK

Gene Alias DKFZp686F1765, P59

Gene Description integrin-linked kinase

Omim ID [602366](#)

Gene Ontology [Hyperlink](#)

Gene Summary Transduction of extracellular matrix signals through integrins influences intracellular and extracellular functions, and appears to require interaction of integrin cytoplasmic domains with cellular proteins. Integrin-linked kinase (ILK), interacts with the cytoplasmic domain of beta-1 integrin. This gene encodes a serine/threonine protein kinase with 4 ankyrin-like repeats, which associates with the cytoplasmic domain of beta integrins and acts as a proximal receptor kinase regulating integrin-mediated signal transduction. Multiple alternatively spliced transcript variants encoding the same protein have been found for this gene. [provided by RefSeq]

Other Designations -

Pathway

- [Endometrial cancer](#)
- [Focal adhesion](#)
- [PPAR signaling pathway](#)