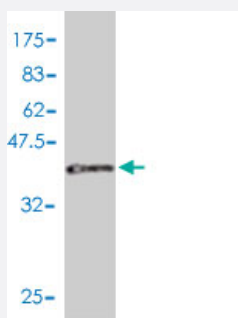


# ILK polyclonal antibody (A01)

Catalog # H00003611-A01

Size 50 uL

## Applications



Western Blot detection against Immunogen (38.43 KDa) .

## Specification

<b>Product Description</b>	Mouse polyclonal antibody raised against a partial recombinant ILK.
<b>Immunogen</b>	ILK (AAH01554, 341 a.a. ~ 452 a.a) partial recombinant protein with GST tag.
<b>Sequence</b>	KFSFQCPGRMYAPAWVAPEALQKKPEDTNRRSADMWSFAVLLWELVTREVPFADLSNMEIGM KVALEGLRPTIPPGISPHVCKLMKICMNEDPAKRPFDMVPILEKMQDK
<b>Host</b>	Mouse
<b>Reactivity</b>	Human
<b>Quality Control Testing</b>	Antibody Reactive Against Recombinant Protein. Western Blot detection against Immunogen (38.43 KDa) .
<b>Storage Buffer</b>	50 % glycerol
<b>Storage Instruction</b>	Store at -20°C or lower. Aliquot to avoid repeated freezing and thawing.

## Applications

- Western Blot (Recombinant protein)

[Protocol Download](#)

- ELISA

## Gene Info — ILK

Entrez GeneID [3611](#)

GeneBank Accession# [BC001554](#)

Protein Accession# [AAH01554](#)

Gene Name ILK

Gene Alias DKFZp686F1765, P59

Gene Description integrin-linked kinase

Omim ID [602366](#)

Gene Ontology [Hyperlink](#)

**Gene Summary** Transduction of extracellular matrix signals through integrins influences intracellular and extracellular functions, and appears to require interaction of integrin cytoplasmic domains with cellular proteins. Integrin-linked kinase (ILK), interacts with the cytoplasmic domain of beta-1 integrin. This gene encodes a serine/threonine protein kinase with 4 ankyrin-like repeats, which associates with the cytoplasmic domain of beta integrins and acts as a proximal receptor kinase regulating integrin-mediated signal transduction. Multiple alternatively spliced transcript variants encoding the same protein have been found for this gene. [provided by RefSeq]

Other Designations -

## Pathway

- [Endometrial cancer](#)
- [Focal adhesion](#)
- [PPAR signaling pathway](#)