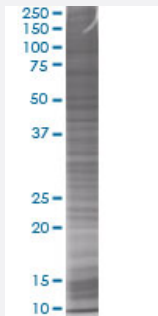


# IGLL1 293T Cell Transient Overexpression Lysate(Denatured)

Catalog # H00003543-T01

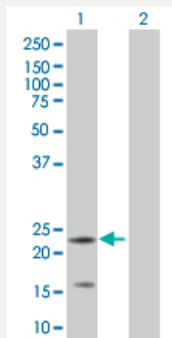
Size 100 uL

## Applications



### SDS-PAGE Gel

IGLL1 transfected lysate



### Western Blot

Lane 1: IGLL1 transfected lysate ( 23.54 KDa).

Lane 2: Non-transfected lysate.

## Specification

Transfected Cell Line	293T
Plasmid	pCMV-IGLL1 full-length
Host	Human
Theoretical MW (kDa)	23.54
Interspecies Antigen Sequence	Mouse (59); Rat (61)

## Quality Control Testing

Transient overexpression cell lysate was tested with Anti-IGLL1 antibody ([H00003543-B01](#)) by Western Blots.  
SDS-PAGE Gel  
IGLL1 transfected lysate  
Western Blot  
Lane 1: IGLL1 transfected lysate ( 23.54 KDa).  
Lane 2: Non-transfected lysate.

## Storage Buffer

1X Sample Buffer (50 mM Tris-HCl, 2% SDS, 10% glycerol, 300 mM 2-mercaptoethanol, 0.01% Bromophenol blue)

## Storage Instruction

Store at -80°C. Aliquot to avoid repeated freezing and thawing.

## Applications

- Western Blot

## Gene Info — IGLL1

## Entrez GeneID

[3543](#)

## GeneBank Accession#

[BC012293](#)

## Protein Accession#

[AAH12293](#)

## Gene Name

IGLL1

## Gene Alias

14.1, CD179b, IGL1, IGL5, IGLJ14.1, IGLL, IGO, IGVPB, VPB2

## Gene Description

immunoglobulin lambda-like polypeptide 1

## Omim ID

[146770 601495](#)

## Gene Ontology

[Hyperlink](#)

## Gene Summary

The preB cell receptor is found on the surface of proB and preB cells, where it is involved in transduction of signals for cellular proliferation, differentiation from the proB cell to the preB cell stage, allelic exclusion at the Ig heavy chain gene locus, and promotion of Ig light chain gene rearrangements. The preB cell receptor is composed of a membrane-bound Ig mu heavy chain in association with a heterodimeric surrogate light chain. This gene encodes one of the surrogate light chain subunits and is a member of the immunoglobulin gene superfamily. This gene does not undergo rearrangement. Mutations in this gene can result in B cell deficiency and agammaglobulinemia, an autosomal recessive disease in which few or no gamma globulins or antibodies are made. Two transcript variants encoding different isoforms have been found for this gene. [provided by RefSeq]

**Other Designations**

CD179b antigen|Pre-B lymphocyte-specific protein-2|immunoglobulin omega polypeptide chain|immunoglobulin-related 14.1 protein|lambda5

---

**Pathway**

- [Primary immunodeficiency](#)