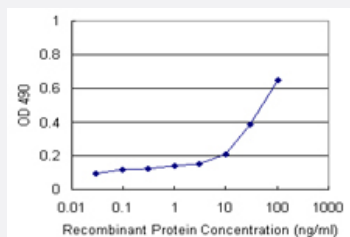


IFIT3 (Human) Matched Antibody Pair

Catalog # H00003437-AP21

Size 1 Set

Applications



Sandwich ELISA detection sensitivity ranging from 10 ng/ml to 100 ng/ml.

Specification

Product Description	This antibody pair set comes with a matched antibody pair to detect and quantify the protein level of human IFIT3.
Reactivity	Human
Interspecies Antigen Sequence	Mouse (60%); Rat (63%)
Quality Control Testing	Standard curve using recombinant protein (H00003437-P01) as an analyte. Sandwich ELISA detection sensitivity ranging from 10 ng/ml to 100 ng/ml.
Supplied Product	Antibody pair set content: 1. Capture antibody: rabbit MaxPab® affinity purified polyclonal anti-IFIT3 (100 ug) 2. Detection antibody: mouse purified polyclonal anti-IFIT3 (20 ug) *Reagents are sufficient for at least 1-2 x 96 well plates using recommended protocols.
Storage Instruction	Store reagents of the antibody pair set at -20°C or lower. Please aliquot to avoid repeated freeze thaw cycle. Reagents should be returned to -20°C storage immediately after use.

Applications

- [ELISA Pair \(Recombinant protein\)](#)

[Protocol Download](#)

Gene Info — IFIT3

Entrez GeneID	3437
Gene Name	IFIT3
Gene Alias	CIG-49, GARG-49, IFI60, IFIT4, IRG2, ISG60, RIG-G
Gene Description	interferon-induced protein with tetratricopeptide repeats 3
Omim ID	604650
Gene Ontology	Hyperlink
Other Designations	OTTHUMP00000020059 OTTHUMP00000020060 interferon-induced 60 kDa protein interferon-induced protein with tetratricopeptide repeats 4 retinoic acid-induced gene G

Disease

- [Alzheimer Disease](#)
- [Genetic Predisposition to Disease](#)