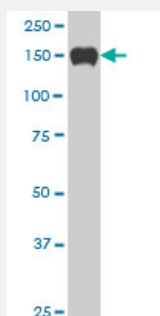


SP110 monoclonal antibody (M03), clone 2G10

Catalog # H00003431-M03

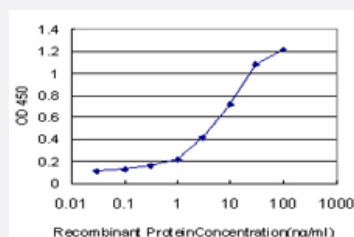
Size 100 ug

Applications



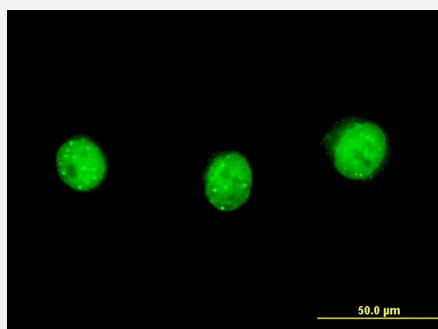
Western Blot (Cell lysate)

SP110 monoclonal antibody (M03), clone 2G10 Western Blot analysis of SP110 expression in HeLa S3 NE (Cat # L013V3).



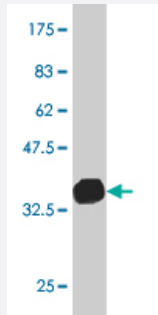
Sandwich ELISA (Recombinant protein)

Detection limit for recombinant GST tagged SP110 is approximately 0.1ng/ml as a capture antibody.



Immunofluorescence

Immunofluorescence of monoclonal antibody to SP110 on HeLa cell. [antibody concentration 10 ug/ml]



Western Blot detection against Immunogen (37.84 KDa) .

Specification

Product Description	Mouse monoclonal antibody raised against a partial recombinant SP110.
Immunogen	SP110 (NP_004501, 271 a.a. ~ 380 a.a) partial recombinant protein with GST tag. MW of the GST tag alone is 26 KDa.
Sequence	TPSDKKGKKRKRCIWSTPKRRHKKKSLPRGTASSRHGIQKKLKRVDQVPQKKDDSTCNSTVETR AQKARTECARKSRSEEIIDGTSEMNEGKRSQKTPSTPRRVTTQGAAS
Host	Mouse
Reactivity	Human
Interspecies Antigen Sequence	Rat (48)
Isotype	IgG2a Kappa
Quality Control Testing	Antibody Reactive Against Recombinant Protein. Western Blot detection against Immunogen (37.84 KDa) .
Storage Buffer	In 1x PBS, pH 7.4
Storage Instruction	Store at -20°C or lower. Aliquot to avoid repeated freezing and thawing.

Applications

- Western Blot (Cell lysate)

SP110 monoclonal antibody (M03), clone 2G10 Western Blot analysis of SP110 expression in Hela S3 NE (Cat # L013V3).

[Protocol Download](#)

- Western Blot (Recombinant protein)

[Protocol Download](#)

- Sandwich ELISA (Recombinant protein)

Detection limit for recombinant GST tagged SP110 is approximately 0.1ng/ml as a capture antibody.

[Protocol Download](#)

- ELISA

- Immunofluorescence

Immunofluorescence of monoclonal antibody to SP110 on HeLa cell. [antibody concentration 10 ug/ml]

Gene Info — SP110

Entrez GeneID [3431](#)

GeneBank Accession# [NM_004510](#)

Protein Accession# [NP_004501](#)

Gene Name SP110

Gene Alias FLJ22835, IFI41, IFI75, IPR1, VODI

Gene Description SP110 nuclear body protein

Omim ID [235550](#) [604457](#) [607948](#)

Gene Ontology [Hyperlink](#)

Gene Summary The nuclear body is a multiprotein complex that may have a role in the regulation of gene transcription. This gene is a member of the SP100/SP140 family of nuclear body proteins and encodes a leukocyte-specific nuclear body component. The protein can function as an activator of gene transcription and may serve as a nuclear hormone receptor coactivator. In addition, it has been suggested that the protein may play a role in ribosome biogenesis and in the induction of myeloid cell differentiation. Alternative splicing has been observed for this gene and three transcript variants, encoding distinct isoforms, have been identified. [provided by RefSeq]

Other Designations interferon-induced protein 41, 30kD|interferon-induced protein 75, 52kD|phosphoprotein 41|phosphoprotein 75|transcriptional coactivator Sp110

Disease

- [Disease Progression](#)
- [Disease Susceptibility](#)
- [Genetic Predisposition to Disease](#)
- [Graft vs Host Disease](#)
- [Hepatitis C](#)
- [HIV Infections](#)
- [Tuberculosis](#)
- [Viremia](#)