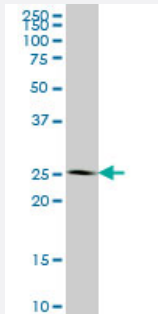


# IDI1 monoclonal antibody (M01), clone 6G10

Catalog # H00003422-M01

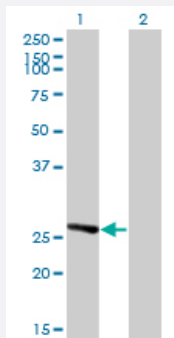
Size 100 ug

## Applications



### Western Blot (Cell lysate)

IDI1 monoclonal antibody (M01), clone 6G10 Western Blot analysis of IDI1 expression in HeLa ( Cat # L013V1 ).

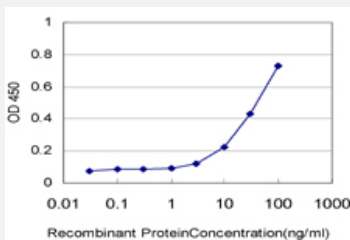


### Western Blot (Transfected lysate)

Western Blot analysis of IDI1 expression in transfected 293T cell line by IDI1 monoclonal antibody (M01), clone 6G10.

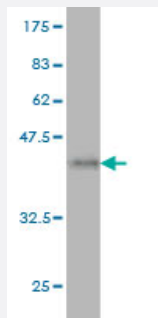
Lane 1: IDI1 transfected lysate(26.5 KDa).

Lane 2: Non-transfected lysate.



### Sandwich ELISA (Recombinant protein)

Detection limit for recombinant GST tagged IDI1 is approximately 1ng/ml as a capture antibody.



Western Blot detection against Immunogen (37.73 KDa) .

## Specification

<b>Product Description</b>	Mouse monoclonal antibody raised against a partial recombinant IDI1.
<b>Immunogen</b>	IDI1 (NP_004499, 175 a.a. ~ 283 a.a) partial recombinant protein with GST tag. MW of the GST tag alone is 26 KDa.
<b>Sequence</b>	IPLEEVPPPEINYLTRIHKAQSDGMWGEHEIDYLLVRKNVTLNPDNPNEIKSYCYVSKEELKELLKKA ASGEIKITPWFKIIAATFLFKWWDNLNHLNQFVDHEKMYR
<b>Host</b>	Mouse
<b>Reactivity</b>	Human
<b>Isotype</b>	IgG1 Kappa
<b>Quality Control Testing</b>	Antibody Reactive Against Recombinant Protein. Western Blot detection against Immunogen (37.73 KDa) .
<b>Storage Buffer</b>	In 1x PBS, pH 7.4
<b>Storage Instruction</b>	Store at -20°C or lower. Aliquot to avoid repeated freezing and thawing.

## Applications

- Western Blot (Cell lysate)

IDI1 monoclonal antibody (M01), clone 6G10 Western Blot analysis of IDI1 expression in HeLa ( Cat # L013V1 ).

[Protocol Download](#)

- Western Blot (Transfected lysate)

Western Blot analysis of IDI1 expression in transfected 293T cell line by IDI1 monoclonal antibody (M01), clone 6G10.

Lane 1: IDI1 transfected lysate(26.5 KDa).

Lane 2: Non-transfected lysate.

[Protocol Download](#)

- Western Blot (Recombinant protein)

[Protocol Download](#)

- Sandwich ELISA (Recombinant protein)

Detection limit for recombinant GST tagged IDI1 is approximately 1ng/ml as a capture antibody.

[Protocol Download](#)

- ELISA

## Gene Info — IDI1

Entrez GeneID [3422](#)

GeneBank Accession# [NM\\_004508](#)

Protein Accession# [NP\\_004499](#)

Gene Name IDI1

Gene Alias IPP1, IPP11

Gene Description isopentenyl-diphosphate delta isomerase 1

Omim ID [604055](#)

Gene Ontology [Hyperlink](#)

**Gene Summary** IDI1 encodes a peroxisomally-localized enzyme that catalyzes the interconversion of isopentenyl diphosphate (IPP) to its highly electrophilic isomer, dimethylallyl diphosphate (DMAPP), which are the substrates for the successive reaction that results in the synthesis of farnesyl diphosphate and, ultimately, cholesterol. It has been shown in peroxisomal deficiency diseases such as Zellweger syndrome and neonatal adrenoleukodystrophy that there is reduction in IPP isomerase activity. [provided by RefSeq]

**Other Designations** IPP isomerase|OTTHUMP00000018951|isopentenyl diphosphate dimethylallyl diphosphate isomerase 1|isopentenyl pyrophosphate isomerase 1|isopentenyl-diphosphate delta isomerase

## Pathway

- [Biosynthesis of alkaloids derived from terpenoid and polyketide](#)
- [Biosynthesis of plant hormones](#)
- [Biosynthesis of terpenoids and steroids](#)
- [Metabolic pathways](#)
- [Terpenoid backbone biosynthesis](#)