

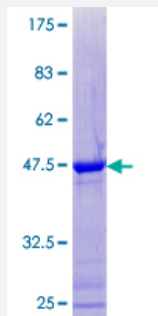
Full-Length

ID4 (Human) Recombinant Protein (P01)

Catalog # H00003400-P01

Size 25 ug, 10 ug

Applications



Specification

Product Description	Human ID4 full-length ORF (NP_001537.1, 1 a.a. - 161 a.a.) recombinant protein with GST-tag at N-terminal.
Sequence	MKAVSPVRPSGRKAPSGCGGGELALRCLAEHGHSLGGSAAAAAAAAAARCKAAEAAADEPAL CLQCDMND CYSRLRRLVPTIPPNNKKVSKVEILQHVIDYILDQLALETHPALLRQPPPPAPPHHPAG TCPAAPRTPLTALNTDPAGAVNKQGDSILCR
Host	Wheat Germ (in vitro)
Theoretical MW (kDa)	43
Interspecies Antigen Sequence	Mouse (98)
Preparation Method	in vitro wheat germ expression system
Purification	Glutathione Sepharose 4 Fast Flow
Quality Control Testing	12.5% SDS-PAGE Stained with Coomassie Blue.
Storage Buffer	50 mM Tris-HCl, 10 mM reduced Glutathione, pH=8.0 in the elution buffer.
Storage Instruction	Store at -80°C. Aliquot to avoid repeated freezing and thawing.

Note

Best use within three months from the date of receipt of this protein.

Applications

- Enzyme-linked Immunoabsorbent Assay
- Western Blot (Recombinant protein)
- Antibody Production
- Protein Array

Gene Info — ID4

Entrez GeneID [3400](#)

GeneBank Accession# [NM_001546.2](#)

Protein Accession# [NP_001537.1](#)

Gene Name ID4

Gene Alias IDB4, bHLHb27

Gene Description inhibitor of DNA binding 4, dominant negative helix-loop-helix protein

Omim ID [600581](#)

Gene Ontology [Hyperlink](#)

Gene Summary Transcription factors containing a basic helix-loop-helix (bHLH) motif regulate expression of tissue-specific genes in a number of mammalian and insect systems. DNA-binding activity of the bHLH proteins is dependent on formation of homo- and/or heterodimers. Dominant-negative HLH proteins encoded by Id-related genes, such as ID4, also contain the HLH-dimerization domain but lack the DNA-binding basic domain. Consequently, Id proteins inhibit binding to DNA and transcriptional transactivation by heterodimerization with bHLH proteins (Pagliuca et al., 1995 [PubMed 7665172]).[supplied by OMIM]

Other Designations OTTHUMP00000016081

Pathway

- [TGF-beta signaling pathway](#)