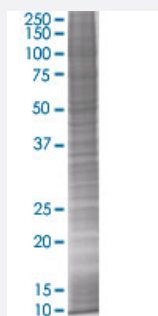


# ID2 293T Cell Transient Overexpression Lysate(Denatured)

Catalog # H00003398-T01

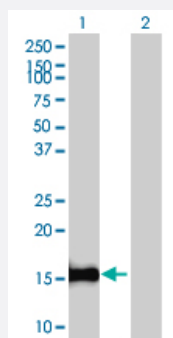
Size 100 uL

## Applications



### SDS-PAGE Gel

ID2 transfected lysate



### Western Blot

Lane 1: ID2 transfected lysate ( 14.85 KDa).

Lane 2: Non-transfected lysate.

## Specification

**Transfected Cell Line** 293T

**Plasmid** pCMV-ID2 full-length

**Host** Human

**Theoretical MW (kDa)** 14.85

**Quality Control Testing** Transient overexpression cell lysate was tested with Anti-ID2 antibody ([H00003398-B01](#)) by Western Blots.  
SDS-PAGE Gel  
ID2 transfected lysate  
Western Blot  
Lane 1: ID2 transfected lysate ( 14.85 KDa).  
Lane 2: Non-transfected lysate.

**Storage Buffer**

1X Sample Buffer (50 mM Tris-HCl, 2% SDS, 10% glycerol, 300 mM 2-mercaptoethanol, 0.01% Bromophenol blue)

**Storage Instruction**

Store at -80°C. Aliquot to avoid repeated freezing and thawing.

## Applications

- Western Blot

## Gene Info — ID2

**Entrez GeneID**[3398](#)**GeneBank Accession#**[BC030639](#)**Protein Accession#**[AAH30639](#)**Gene Name**

ID2

**Gene Alias**

GIG8, ID2A, ID2H, MGC26389, bHLHb26

**Gene Description**

inhibitor of DNA binding 2, dominant negative helix-loop-helix protein

**Omim ID**[600386](#)**Gene Ontology**[Hyperlink](#)**Gene Summary**

The protein encoded by this gene belongs to the inhibitor of DNA binding (ID) family, members of which are transcriptional regulators that contain a helix-loop-helix (HLH) domain but not a basic domain. Members of the ID family inhibit the functions of basic helix-loop-helix transcription factors in a dominant-negative manner by suppressing their heterodimerization partners through the HLH domains. This protein may play a role in negatively regulating cell differentiation. A pseudogene has been identified for this gene. [provided by RefSeq]

**Other Designations**

DNA-binding protein inhibitor ID2|OTTHUMP00000140258|cell growth-inhibiting gene 8|helix-loop-helix protein ID2|inhibitor of DNA binding 2|inhibitor of differentiation 2

## Pathway

- [TGF-beta signaling pathway](#)

## Disease

- [Attention Deficit Disorder with Hyperactivity](#)
- [Functional Laterality](#)
- [Genetic Predisposition to Disease](#)
- [Ovarian Neoplasms](#)