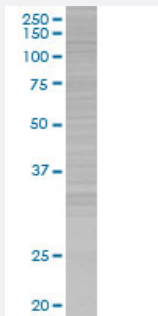


# ID1 293T Cell Transient Overexpression Lysate(Denatured)

Catalog # H00003397-T01

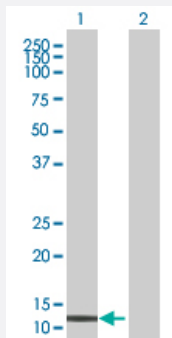
Size 100 uL

## Applications



### SDS-PAGE Gel

ID1 transfected lysate.



### Western Blot

Lane 1: ID1 transfected lysate ( 17.16 KDa)

Lane 2: Non-transfected lysate.

## Specification

**Transfected Cell Line** 293T

**Plasmid** pCMV-ID1 full-length

**Host** Human

**Theoretical MW (kDa)** 17.16

**Quality Control Testing** Transient overexpression cell lysate was tested with Anti-ID1 antibody ([H00003397-B01](#)) by Western Blots.  
 SDS-PAGE Gel  
 ID1 transfected lysate.  
 Western Blot  
 Lane 1: ID1 transfected lysate ( 17.16 KDa)  
 Lane 2: Non-transfected lysate.

**Storage Buffer**

1X Sample Buffer (50 mM Tris-HCl, 2% SDS, 10% glycerol, 300 mM 2-mercaptoethanol, 0.01% Bromophenol blue)

**Storage Instruction**

Store at -80°C. Aliquot to avoid repeated freezing and thawing.

## Applications

- Western Blot

## Gene Info — ID1

**Entrez GeneID**[3397](#)**GeneBank Accession#**[NM\\_002165](#)**Protein Accession#**[NP\\_002156](#)**Gene Name**

ID1

**Gene Alias**

ID, bHLHb24

**Gene Description**

inhibitor of DNA binding 1, dominant negative helix-loop-helix protein

**Omim ID**[600349](#)**Gene Ontology**[Hyperlink](#)**Gene Summary**

The protein encoded by this gene is a helix-loop-helix (HLH) protein that can form heterodimers with members of the basic HLH family of transcription factors. The encoded protein has no DNA binding activity and therefore can inhibit the DNA binding and transcriptional activation ability of basic HLH proteins with which it interacts. This protein may play a role in cell growth, senescence, and differentiation. Two transcript variants encoding different isoforms have been found for this gene. [provided by RefSeq]

**Other Designations**

DNA-binding protein inhibitor ID-1|OTTHUMP00000030534|OTTHUMP00000030535|dJ857M17.1.2 (inhibitor of DNA binding 1, dominant negative helix-loop-helix protein)|inhibitor of DNA binding 1|inhibitor of differentiation 1

## Pathway

- [TGF-beta signaling pathway](#)