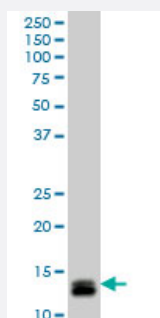


# ID1 monoclonal antibody (M04), clone 4G11

Catalog # H00003397-M04

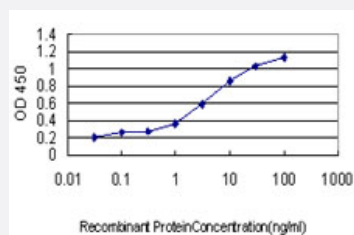
Size 100 ug

## Applications



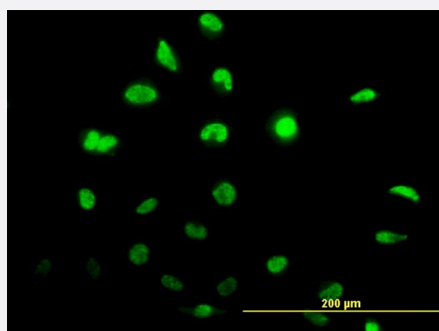
### Western Blot (Cell lysate)

ID1 monoclonal antibody (M04), clone 4G11 Western Blot analysis of ID1 expression in Y-79 ( Cat # L042V1 ).



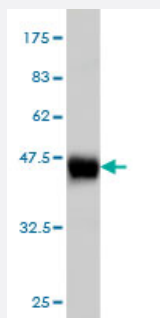
### Sandwich ELISA (Recombinant protein)

Detection limit for recombinant GST tagged ID1 is approximately 0.03ng/ml as a capture antibody.



### Immunofluorescence

Immunofluorescence of monoclonal antibody to ID1 on HeLa cell. [antibody concentration 10 ug/ml]



Western Blot detection against Immunogen (42.79 KDa) .

## Specification

<b>Product Description</b>	Mouse monoclonal antibody raised against a full length recombinant ID1.
<b>Immunogen</b>	ID1 (AAH00613.1, 1 a.a. ~ 155 a.a) full-length recombinant protein with GST tag. MW of the GST tag alone is 26 KDa.
<b>Sequence</b>	MKVASGSTATAAAGPSCALKAGKTASGAGEVVRCLSEQSVAISRCAGGAGARLPALLDEQQVN VLLYDMNGCYSRLKELVPTLPQNRKVSKEILQHVIDYIRDLQLELNSESEVGTPGGRGLPVRAPL STLNGEISALTAEAACVPADDRILCR
<b>Host</b>	Mouse
<b>Reactivity</b>	Human
<b>Isotype</b>	IgG2a Kappa
<b>Quality Control Testing</b>	Antibody Reactive Against Recombinant Protein. Western Blot detection against Immunogen (42.79 KDa) .
<b>Storage Buffer</b>	In 1x PBS, pH 7.4
<b>Storage Instruction</b>	Store at -20°C or lower. Aliquot to avoid repeated freezing and thawing.

## Applications

- Western Blot (Cell lysate)

ID1 monoclonal antibody (M04), clone 4G11 Western Blot analysis of ID1 expression in Y-79 ( Cat # L042V1 ).

[Protocol Download](#)

- Western Blot (Recombinant protein)

[Protocol Download](#)

- Sandwich ELISA (Recombinant protein)

Detection limit for recombinant GST tagged ID1 is approximately 0.03ng/ml as a capture antibody.

[Protocol Download](#)

- ELISA

- Immunofluorescence

Immunofluorescence of monoclonal antibody to ID1 on HeLa cell. [antibody concentration 10 ug/ml]

## Gene Info — ID1

Entrez GeneID [3397](#)

GeneBank Accession# [BC000613](#)

Protein Accession# [AAH00613.1](#)

Gene Name ID1

Gene Alias ID, bHLHb24

Gene Description inhibitor of DNA binding 1, dominant negative helix-loop-helix protein

Omim ID [600349](#)

Gene Ontology [Hyperlink](#)

**Gene Summary** The protein encoded by this gene is a helix-loop-helix (HLH) protein that can form heterodimers with members of the basic HLH family of transcription factors. The encoded protein has no DNA binding activity and therefore can inhibit the DNA binding and transcriptional activation ability of basic HLH proteins with which it interacts. This protein may play a role in cell growth, senescence, and differentiation. Two transcript variants encoding different isoforms have been found for this gene. [provided by RefSeq]

**Other Designations** DNA-binding protein inhibitor ID-1|OTTHUMP00000030534|OTTHUMP00000030535|dJ857M17.1.2 (inhibitor of DNA binding 1, dominant negative helix-loop-helix protein)|inhibitor of DNA binding 1|inhibitor of differentiation 1

## Publication Reference

- [ID3 contributes to cerebrospinal fluid seeding and poor prognosis in medulloblastoma.](#)

Phi JH, Choi SA, Lim SH, Lee J, Wang KC, Park SH, Kim SK.

BMC Cancer 2013 Jun; 13:291.

Application: WB-Tr, Human, D283 cells

## Pathway

- [TGF-beta signaling pathway](#)