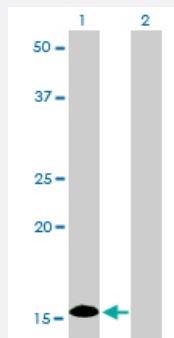


# ID1 monoclonal antibody (M02), clone 1F7

Catalog # H00003397-M02

Size 100 ug

## Applications

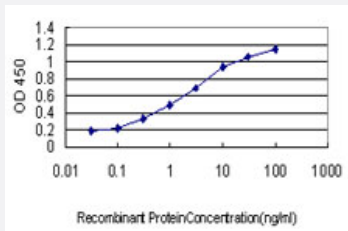


### Western Blot (Transfected lysate)

Western Blot analysis of ID1 expression in transfected 293T cell line by ID1 monoclonal antibody (M02), clone 1F7.

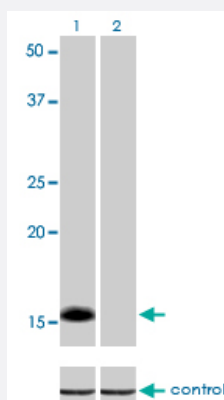
Lane 1: ID1 transfected lysate (16.1 KDa).

Lane 2: Non-transfected lysate.



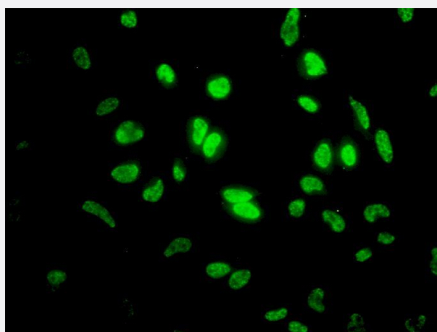
### Sandwich ELISA (Recombinant protein)

Detection limit for recombinant GST tagged ID1 is approximately 0.1 ng/ml as a capture antibody.



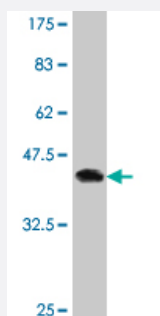
### RNAi Knockdown (Antibody validated)

Western blot analysis of ID1 over-expressed 293 cell line, cotransfected with ID1 Validated Chimera RNAi (Cat # H00003397-R01V) (Lane 2) or non-transfected control (Lane 1). Blot probed with ID1 monoclonal antibody (M02), clone 1F7 (Cat # H00003397-M02). GAPDH (36.1 kDa) used as specificity and loading control.



## Immunofluorescence

Immunofluorescence of monoclonal antibody to ID1 on HeLa cell. [antibody concentration 10 ug/ml]



Western Blot detection against Immunogen (42.79 KDa) .

## Specification

<b>Product Description</b>	Mouse monoclonal antibody raised against a full length recombinant ID1.
<b>Immunogen</b>	ID1 (AAH00613.1, 1 a.a. ~ 155 a.a) full-length recombinant protein with GST tag. MW of the GST tag alone is 26 KDa.
<b>Sequence</b>	MKVASGSTATAAAGPSCALKAGKTASGAGEVVRCLSEQSVAISRCAGGAGARLPALLDEQQVN VLLYDMNGCYSRLKELVPTLPQNRKVSKEILQHVIDYIRDLQLELNSESEVGTPGGRGLPVRAPL STLNGEISALTAEACVPADDRILCR
<b>Host</b>	Mouse
<b>Reactivity</b>	Human
<b>Isotype</b>	IgG2a Kappa
<b>Quality Control Testing</b>	Antibody Reactive Against Recombinant Protein. Western Blot detection against Immunogen (42.79 KDa) .
<b>Storage Buffer</b>	In 1x PBS, pH 7.4
<b>Storage Instruction</b>	Store at -20°C or lower. Aliquot to avoid repeated freezing and thawing.

## Applications

- Western Blot (Transfected lysate)

Western Blot analysis of ID1 expression in transfected 293T cell line by ID1 monoclonal antibody (M02), clone 1F7.

Lane 1: ID1 transfected lysate(16.1 KDa).

Lane 2: Non-transfected lysate.

[Protocol Download](#)

- Western Blot (Recombinant protein)

[Protocol Download](#)

- Sandwich ELISA (Recombinant protein)

Detection limit for recombinant GST tagged ID1 is approximately 0.1ng/ml as a capture antibody.

[Protocol Download](#)

- ELISA

- RNAi Knockdown (Antibody validated)

Western blot analysis of ID1 over-expressed 293 cell line, cotransfected with ID1 Validated Chimera RNAi ( Cat # H00003397-R01V ) (Lane 2) or non-transfected control (Lane 1). Blot probed with ID1 monoclonal antibody (M02), clone 1F7 (Cat # H00003397-M02 ). GAPDH ( 36.1 kDa ) used as specificity and loading control.

[Protocol Download](#)

- Immunofluorescence

Immunofluorescence of monoclonal antibody to ID1 on HeLa cell. [antibody concentration 10 ug/ml]

## Gene Info — ID1

Entrez GeneID [3397](#)

GeneBank Accession# [BC000613](#)

Protein Accession# [AAH00613.1](#)

Gene Name ID1

Gene Alias ID, bHLHb24

Gene Description inhibitor of DNA binding 1, dominant negative helix-loop-helix protein

**Omim ID** [600349](#)

**Gene Ontology** [Hyperlink](#)

**Gene Summary** The protein encoded by this gene is a helix-loop-helix (HLH) protein that can form heterodimers with members of the basic HLH family of transcription factors. The encoded protein has no DNA binding activity and therefore can inhibit the DNA binding and transcriptional activation ability of basic HLH proteins with which it interacts. This protein may play a role in cell growth, senescence, and differentiation. Two transcript variants encoding different isoforms have been found for this gene. [provided by RefSeq]

**Other Designations** DNA-binding protein inhibitor ID-1|OTTHUMP00000030534|OTTHUMP00000030535|dJ857M17.1.2 (inhibitor of DNA binding 1, dominant negative helix-loop-helix protein)|inhibitor of DNA binding 1|inhibitor of differentiation 1

## Pathway

- [TGF-beta signaling pathway](#)