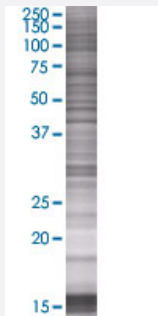


ICT1 293T Cell Transient Overexpression Lysate(Denatured)

Catalog # H00003396-T01

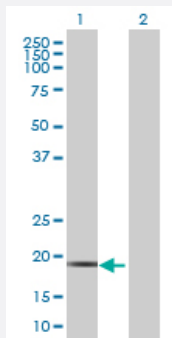
Size 100 uL

Applications



SDS-PAGE Gel

ICT1 transfected lysate.



Western Blot

Lane 1: ICT1 transfected lysate (22.77 KDa)

Lane 2: Non-transfected lysate.

Specification

Transfected Cell Line	293T
Plasmid	pCMV-ICT1 full-length
Host	Human
Theoretical MW (kDa)	22.77
Interspecies Antigen Sequence	Mouse (68); Rat (80)

Quality Control Testing

Transient overexpression cell lysate was tested with Anti-ICT1 antibody ([H00003396-B01](#)) by Western Blots.
SDS-PAGE Gel
ICT1 transfected lysate.
Western Blot
Lane 1: ICT1 transfected lysate (22.77 KDa)
Lane 2: Non-transfected lysate.

Storage Buffer

1X Sample Buffer (50 mM Tris-HCl, 2% SDS, 10% glycerol, 300 mM 2-mercaptoethanol, 0.01% Bromophenol blue)

Storage Instruction

Store at -80°C. Aliquot to avoid repeated freezing and thawing.

Applications

- Western Blot

Gene Info — ICT1

Entrez GeneID[3396](#)**GeneBank Accession#**[NM_001545.1](#)**Protein Accession#**[NP_001536.1](#)**Gene Name**

ICT1

Gene Alias

DS-1

Gene Description

immature colon carcinoma transcript 1

Omim ID[603000](#)**Gene Ontology**[Hyperlink](#)**Gene Summary**

The adult colon epithelium contains 3 differentiated cell types that arise from a multipotent stem cell. Deviation from the normal maturation pathway by neoplastic transformation is thought to initiate in stem cells or their early descendants. One potential marker is ICT1 whose mRNA and protein were more highly expressed in undifferentiated than in differentiated cells. [provided by RefSeq]

Other Designations

-