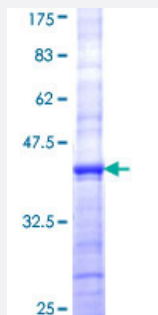


ICT1 (Human) Recombinant Protein (Q01)

Catalog # H00003396-Q01

Size 25 ug, 10 ug

Applications



Specification

Product Description	Human ICT1 partial ORF (NP_001536, 107 a.a. - 206 a.a.) recombinant protein with GST-tag at N-terminal.
Sequence	TAEWIAEPVRQKIAITHKNKINRLGELITSESSRYQFRNLADCLQKIRDMITEASQTPKEPTKEDVKL HRIRIENMNRERLRQKRIHSAVKTSRRVDMD
Host	Wheat Germ (in vitro)
Theoretical MW (kDa)	36.74
Interspecies Antigen Sequence	Mouse (79); Rat (79)
Preparation Method	in vitro wheat germ expression system
Purification	Glutathione Sepharose 4 Fast Flow
Quality Control Testing	12.5% SDS-PAGE Stained with Coomassie Blue.
Storage Buffer	50 mM Tris-HCl, 10 mM reduced Glutathione, pH=8.0 in the elution buffer.
Storage Instruction	Store at -80°C. Aliquot to avoid repeated freezing and thawing.
Note	Best use within three months from the date of receipt of this protein.

Applications

- Enzyme-linked Immunoabsorbent Assay
- Western Blot (Recombinant protein)
- Antibody Production
- Protein Array

Gene Info — ICT1

Entrez GeneID	3396
---------------	----------------------

GeneBank Accession#	NM_001545
---------------------	---------------------------

Protein Accession#	NP_001536
--------------------	---------------------------

Gene Name	ICT1
-----------	------

Gene Alias	DS-1
------------	------

Gene Description	immature colon carcinoma transcript 1
------------------	---------------------------------------

Omim ID	603000
---------	------------------------

Gene Ontology	Hyperlink
---------------	---------------------------

Gene Summary	The adult colon epithelium contains 3 differentiated cell types that arise from a multipotent stem cell. Deviation from the normal maturation pathway by neoplastic transformation is thought to initiate in stem cells or their early descendants. One potential marker is ICT1 whose mRNA and protein were more highly expressed in undifferentiated than in differentiated cells. [provided by RefSeq]
--------------	---

Other Designations	-
--------------------	---