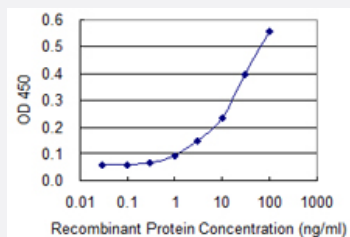


ICT1 monoclonal antibody (M06), clone 4C10

Catalog # H00003396-M06

Size 100 ug

Applications



Sandwich ELISA (Recombinant protein)

Detection limit for recombinant GST tagged ICT1 is 0.3 ng/ml as a capture antibody.

Specification

Product Description	Mouse monoclonal antibody raised against a partial recombinant ICT1.
Immunogen	ICT1 (NP_001536, 107 a.a. ~ 206 a.a) partial recombinant protein with GST tag. MW of the GST tag alone is 26 KDa.
Sequence	TAEWIAEPVRQKIAITHKNKINRLGELITSESSRYQFRNLADCLQKIRDMITEASQTPKEPTKEDVKL HRIRIENMNRERLRQKRIHSAVKTSRRVDMD
Host	Mouse
Reactivity	Human
Interspecies Antigen Sequence	Mouse (79); Rat (79)
Isotype	IgG2a Kappa
Quality Control Testing	Antibody Reactive Against Recombinant Protein.
Storage Buffer	In 1x PBS, pH 7.4
Storage Instruction	Store at -20°C or lower. Aliquot to avoid repeated freezing and thawing.

Applications

- Sandwich ELISA (Recombinant protein)

Detection limit for recombinant GST tagged ICT1 is 0.3 ng/ml as a capture antibody.

[Protocol Download](#)

- ELISA

Gene Info — ICT1

Entrez GeneID	3396
---------------	----------------------

GeneBank Accession#	NM_001545
---------------------	---------------------------

Protein Accession#	NP_001536
--------------------	---------------------------

Gene Name	ICT1
-----------	------

Gene Alias	DS-1
------------	------

Gene Description	immature colon carcinoma transcript 1
------------------	---------------------------------------

Omim ID	603000
---------	------------------------

Gene Ontology	Hyperlink
---------------	---------------------------

Gene Summary	The adult colon epithelium contains 3 differentiated cell types that arise from a multipotent stem cell. Deviation from the normal maturation pathway by neoplastic transformation is thought to initiate in stem cells or their early descendants. One potential marker is ICT1 whose mRNA and protein were more highly expressed in undifferentiated than in differentiated cells. [provided by RefSeq]
--------------	---

Other Designations	-
--------------------	---