

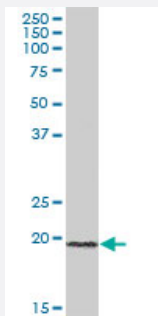
MaxPab®

ICT1 purified MaxPab mouse polyclonal antibody (B01P)

Catalog # H00003396-B01P

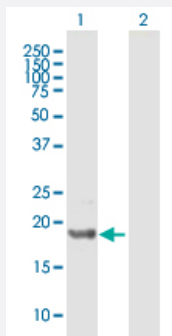
Size 50 ug

Applications



Western Blot (Tissue lysate)

ICT1 MaxPab polyclonal antibody. Western Blot analysis of ICT1 expression in human colon.

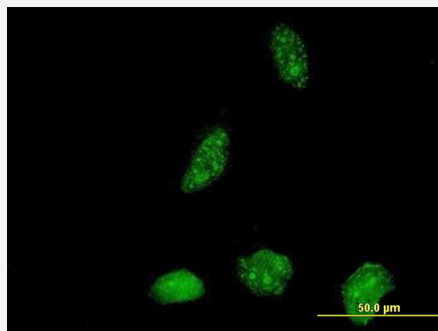


Western Blot (Transfected lysate)

Western Blot analysis of ICT1 expression in transfected 293T cell line ([H00003396-T01](#)) by ICT1 MaxPab polyclonal antibody.

Lane 1: ICT1 transfected lysate(22.66 KDa).

Lane 2: Non-transfected lysate.



Immunofluorescence

Immunofluorescence of purified MaxPab antibody to ICT1 on HeLa cell. [antibody concentration 10 ug/ml]

Specification

Product Description

Mouse polyclonal antibody raised against a full-length human ICT1 protein.

Immunogen	ICT1 (NP_001536.1, 1 a.a. ~ 206 a.a) full-length human protein.
Sequence	MAATRCLRWGLSRAGVWLLPPPAPRCPRRALHKQKDGTEFKSIYSLDKLYPESQGSDTAWRVPN GAKQADSDIPLDRLTISYCRSSGPGGQNVNKNVNSKAEVRFHLATAEWIAEPVRQKIAITHKNKINRL GELILTSESSRYQFRNLADCLQKIRDMITEASQTPKEPTKEDVKLHRIRIENMNRERLRQKRIHSAVK TSRRVDMD
Host	Mouse
Reactivity	Human
Interspecies Antigen Sequence	Mouse (68); Rat (80)
Quality Control Testing	Antibody reactive against mammalian transfected lysate.
Storage Buffer	In 1x PBS, pH 7.4
Storage Instruction	Store at -20°C or lower. Aliquot to avoid repeated freezing and thawing.

Applications

- Western Blot (Tissue lysate)

ICT1 MaxPab polyclonal antibody. Western Blot analysis of ICT1 expression in human colon.

[Protocol Download](#)

- Western Blot (Transfected lysate)

Western Blot analysis of ICT1 expression in transfected 293T cell line ([H00003396-T01](#)) by ICT1 MaxPab polyclonal antibody.

Lane 1: ICT1 transfected lysate(22.66 KDa).

Lane 2: Non-transfected lysate.

[Protocol Download](#)

- Immunofluorescence

Immunofluorescence of purified MaxPab antibody to ICT1 on HeLa cell. [antibody concentration 10 ug/ml]

Gene Info — ICT1

Entrez GeneID	3396
GeneBank Accession#	NM_001545.1
Protein Accession#	NP_001536.1

Gene Name	ICT1
Gene Alias	DS-1
Gene Description	immature colon carcinoma transcript 1
Omim ID	603000
Gene Ontology	Hyperlink
Gene Summary	The adult colon epithelium contains 3 differentiated cell types that arise from a multipotent stem cell. Deviation from the normal maturation pathway by neoplastic transformation is thought to initiate in stem cells or their early descendants. One potential marker is ICT1 whose mRNA and protein were more highly expressed in undifferentiated than in differentiated cells. [provided by RefSeq]
Other Designations	-