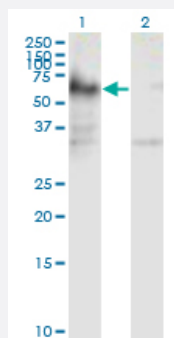


ICA1 monoclonal antibody (M01), clone 6G11

Catalog # H00003382-M01

Size 100 ug

Applications

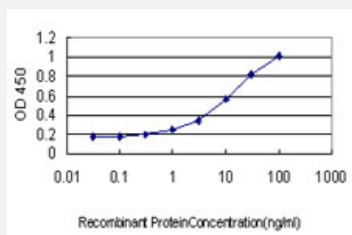


Western Blot (Transfected lysate)

Western Blot analysis of ICA1 expression in transfected 293T cell line by ICA1 monoclonal antibody (M01), clone 6G11.

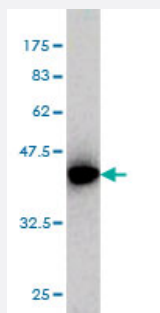
Lane 1: ICA1 transfected lysate (Predicted MW: 54.6 KDa).

Lane 2: Non-transfected lysate.



Sandwich ELISA (Recombinant protein)

Detection limit for recombinant GST tagged ICA1 is approximately 0.3ng/ml as a capture antibody.



Western Blot detection against Immunogen (37.84 KDa) .

Specification

Product Description

Mouse monoclonal antibody raised against a partial recombinant ICA1.

Immunogen	ICA1 (NP_071682, 1 a.a. ~ 110 a.a) partial recombinant protein with GST tag. MW of the GST tag alone is 26 KDa.
Sequence	MSGHKCSYPWDLQDRYAQDKSVVNKMQQKYWETKQAFIKATGKKEDHVVASDADLDAKLELF HSIQRRTCLDLSKAMLYQKRICFLSQEENELGKFLRSQGFQDKTRAG
Host	Mouse
Reactivity	Human
Interspecies Antigen Sequence	Mouse (96); Rat (96)
Isotype	IgG2a Kappa
Quality Control Testing	Antibody Reactive Against Recombinant Protein. Western Blot detection against Immunogen (37.84 KDa) .
Storage Buffer	In 1x PBS, pH 7.4
Storage Instruction	Store at -20°C or lower. Aliquot to avoid repeated freezing and thawing.

Applications

- Western Blot (Transfected lysate)

Western Blot analysis of ICA1 expression in transfected 293T cell line by ICA1 monoclonal antibody (M01), clone 6G11.

Lane 1: ICA1 transfected lysate (Predicted MW: 54.6 KDa).

Lane 2: Non-transfected lysate.

[Protocol Download](#)

- Western Blot (Recombinant protein)

[Protocol Download](#)

- Sandwich ELISA (Recombinant protein)

Detection limit for recombinant GST tagged ICA1 is approximately 0.3ng/ml as a capture antibody.

[Protocol Download](#)

- ELISA

Gene Info — ICA1

Entrez GeneID	3382
GeneBank Accession#	NM_022307
Protein Accession#	NP_071682
Gene Name	ICA1
Gene Alias	ICA69, ICAp69
Gene Description	islet cell autoantigen 1, 69kDa
Omim ID	147625
Gene Ontology	Hyperlink
Gene Summary	This gene encodes a protein with an arfaptin homology domain that is found both in the cytosol and as membrane-bound form on the Golgi complex and immature secretory granules. This protein is believed to be an autoantigen in insulin-dependent diabetes mellitus and primary Sjogren's syndrome. Alternatively spliced variants which encode different protein isoforms have been described; however, not all variants have been fully characterized. [provided by RefSeq]
Other Designations	diabetes mellitus type I autoantigen islet cell autoantigen 1 islet cell autoantigen 1 (69kD) islet cell autoantigen 1 isoform islet cell autoantigen p69

Pathway

- [Type I diabetes mellitus](#)

Disease

- [Genetic Predisposition to Disease](#)
- [Tobacco Use Disorder](#)
- [Vitiligo](#)