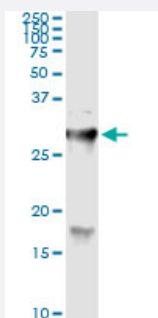


# HYAL1 (Human) IP-WB Antibody Pair

Catalog # H00003373-PW1

Size 1 Set

## Applications



Immunoprecipitation of HYAL1 transfected lysate using mouse monoclonal anti-HYAL1 and Protein A Magnetic Bead ([U0007](#)), and immunoblotted with rabbit polyclonal anti-HYAL1.

## Specification

|                                |   |
|--------------------------------|---|
| <b>Product Description</b>     | This IP-WB antibody pair set comes with one antibody for immunoprecipitation and another to detect the precipitated protein in western blot.  |
| <b>Reactivity</b>              | Human   |
| <b>Quality Control Testing</b> | Immunoprecipitation-Western Blot (IP-WB)<br>Immunoprecipitation of HYAL1 transfected lysate using mouse monoclonal anti-HYAL1 and Protein A Magnetic Bead ( <a href="#">U0007</a> ), and immunoblotted with rabbit polyclonal anti-HYAL1. |
| <b>Supplied Product</b>        | Antibody pair set content:<br>1. Antibody pair for IP: mouse monoclonal anti-HYAL1 (300 ug)<br>2. Antibody pair for WB: rabbit polyclonal anti-HYAL1 (50 ul)  |
| <b>Storage Instruction</b>     | Store reagents of the antibody pair set at -20°C or lower. Please aliquot to avoid repeated freeze thaw cycle. Reagents should be returned to -20°C storage immediately after use.  |

## Applications

- Immunoprecipitation-Western Blot

[Protocol Download](#)

## Gene Info — HYAL1

Entrez GeneID [3373](#)

Gene Name HYAL1

Gene Alias HYAL-1, LUCA1, MGC45987, NAT6

Gene Description hyaluronoglucosaminidase 1

Omim ID [601492 607071](#)

Gene Ontology [Hyperlink](#)

**Gene Summary** This gene encodes a lysosomal hyaluronidase. Hyaluronidases intracellularly degrade hyaluronan, one of the major glycosaminoglycans of the extracellular matrix. Hyaluronan is thought to be involved in cell proliferation, migration and differentiation. This enzyme is active at an acidic pH and is the major hyaluronidase in plasma. Mutations in this gene are associated with mucopolysaccharidosis type IX, or hyaluronidase deficiency. The gene is one of several related genes in a region of chromosome 3p21.3 associated with tumor suppression. Multiple transcript variants encoding different isoforms have been found for this gene. [provided by RefSeq]

**Other Designations** hyaluronidase 1|plasma hyaluronidase|tumor suppressor LUCA-1

## Pathway

- [Glycosaminoglycan degradation](#)
- [Metabolic pathways](#)

## Disease

- [Cleft Lip](#)
- [Cleft Palate](#)