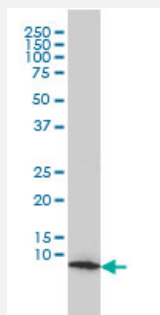


# HSPE1 monoclonal antibody (M01), clone 4C11-B11

Catalog # H00003336-M01

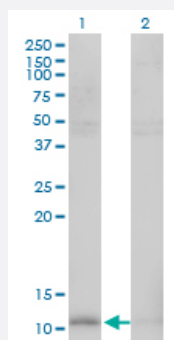
Size 100 ug

## Applications



### Western Blot (Cell lysate)

HSPE1 monoclonal antibody (M01), clone 4C11-B11 Western Blot analysis of HSPE1 expression in COLO 320 HSR ( Cat # L020V1 ).

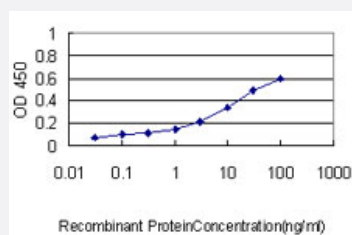


### Western Blot (Transfected lysate)

Western Blot analysis of HSPE1 expression in transfected 293T cell line by HSPE1 monoclonal antibody (M01), clone 4C11-B11.

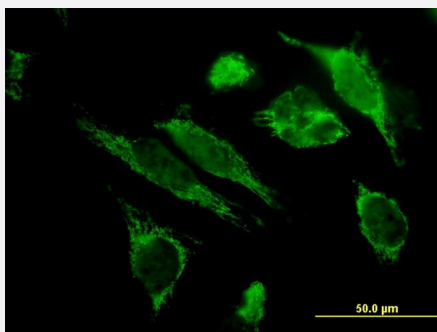
Lane 1: HSPE1 transfected lysate(10.9 KDa).

Lane 2: Non-transfected lysate.



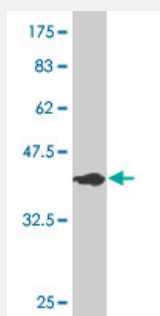
### Sandwich ELISA (Recombinant protein)

Detection limit for recombinant GST tagged HSPE1 is approximately 0.1ng/ml as a capture antibody.



## Immunofluorescence

Immunofluorescence of monoclonal antibody to HSPE1 on HeLa cell. [antibody concentration 10 ug/ml]



Western Blot detection against Immunogen (36.96 KDa) .

## Specification

<b>Product Description</b>	Mouse monoclonal antibody raised against a full length recombinant HSPE1.
<b>Immunogen</b>	HSPE1 (AAH23518, 1 a.a. ~ 102 a.a) full-length recombinant protein with GST tag. MW of the GST tag alone is 26 KDa.
<b>Sequence</b>	MAGQAFRKFLPLFDRVLVERSAAETVTKGGIMLPEKSQGGKVLQATVVAVGSGSKGKGGEIQPVS VKVGDKVLLPEYGGTKVVLDDKDYFLFRDGDILGKYVD
<b>Host</b>	Mouse
<b>Reactivity</b>	Human
<b>Isotype</b>	IgG1 kappa
<b>Quality Control Testing</b>	Antibody Reactive Against Recombinant Protein. Western Blot detection against Immunogen (36.96 KDa) .
<b>Storage Buffer</b>	In 1x PBS, pH 7.4
<b>Storage Instruction</b>	Store at -20°C or lower. Aliquot to avoid repeated freezing and thawing.

## Applications

- Western Blot (Cell lysate)

HSPE1 monoclonal antibody (M01), clone 4C11-B11 Western Blot analysis of HSPE1 expression in COLO 320 HSR ( Cat # L020V1 ).

[Protocol Download](#)

- Western Blot (Transfected lysate)

Western Blot analysis of HSPE1 expression in transfected 293T cell line by HSPE1 monoclonal antibody (M01), clone 4C11-B11.

Lane 1: HSPE1 transfected lysate(10.9 KDa).

Lane 2: Non-transfected lysate.

[Protocol Download](#)

- Western Blot (Recombinant protein)

[Protocol Download](#)

- Sandwich ELISA (Recombinant protein)

Detection limit for recombinant GST tagged HSPE1 is approximately 0.1ng/ml as a capture antibody.

[Protocol Download](#)

- ELISA

- Immunofluorescence

Immunofluorescence of monoclonal antibody to HSPE1 on HeLa cell. [antibody concentration 10 ug/ml]

## Gene Info — HSPE1

Entrez GeneID [3336](#)

GeneBank Accession# [BC023518](#)

Protein Accession# [AAH23518](#)

Gene Name HSPE1

Gene Alias CPN10, GROES, HSP10

Gene Description heat shock 10kDa protein 1 (chaperonin 10)

Omim ID [600141](#)

**Gene Ontology**[Hyperlink](#)**Gene Summary**

This gene encodes a major heat shock protein which functions as a chaperonin. Its structure consists of a heptameric ring which binds to another heat shock protein in order to form a symmetric, functional heterodimer which enhances protein folding in an ATP-dependent manner. This gene and its co-chaperonin, HSPD1, are arranged in a head-to-head orientation on chromosome 2. [provided by RefSeq]

**Other Designations**

chaperonin 10|heat shock 10kD protein 1 (chaperonin 10)|heat shock 10kDa protein 1

**Disease**

- [Ovarian cancer](#)
- [Ovarian Neoplasms](#)