

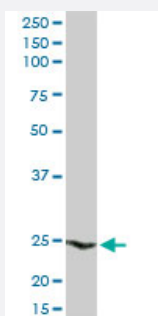
MaxPab®

HSPB1 purified MaxPab rabbit polyclonal antibody (D01P)

Catalog # H00003315-D01P

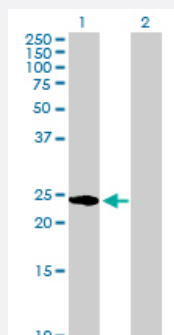
Size 100 ug

Applications



Western Blot (Tissue lysate)

HSPB1 MaxPab rabbit polyclonal antibody. Western Blot analysis of HSPB1 expression in human liver.

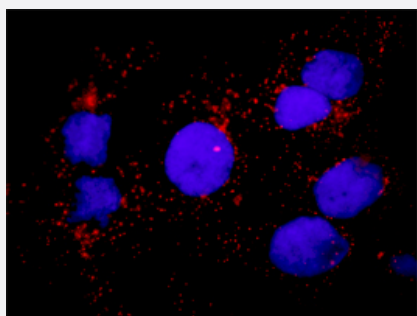


Western Blot (Transfected lysate)

Western Blot analysis of HSPB1 expression in transfected 293T cell line ([H00003315-T01](#)) by HSPB1 MaxPab polyclonal antibody.

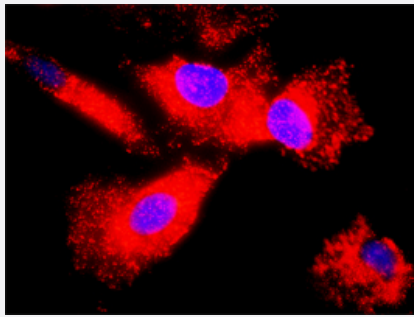
Lane 1: HSPB1 transfected lysate(22.80 KDa).

Lane 2: Non-transfected lysate.



In situ Proximity Ligation Assay (Cell)

Proximity Ligation Analysis of protein-protein interactions between HSPB1 and F13A1. Huh7 cells were stained with anti-HSPB1 rabbit purified polyclonal 1:1200 and anti-F13A1 mouse monoclonal antibody 1:50. Each red dot represents the detection of protein-protein interaction complex, and nuclei were counterstained with DAPI (blue).



In situ Proximity Ligation Assay (Cell)

Proximity Ligation Analysis of protein-protein interactions between HSPB1 and EGFR. HeLa cells were stained with anti-HSPB1 rabbit purified polyclonal 1:1200 and anti-EGFR mouse purified polyclonal antibody 1:50. Each red dot represents the detection of protein-protein interaction complex, and nuclei were counterstained with DAPI (blue).

Specification

Product Description	Rabbit polyclonal antibody raised against a full-length human HSPB1 protein.
Immunogen	HSPB1 (NP_001531.1, 1 a.a. ~ 205 a.a) full-length human protein.
Sequence	MTERRVPFSLLRGPSWDPFRDWYPHSRLFDQAFGLPRLPEEWSQWLGGSSWPGYVRPLPPAA IESPAVAAPAYSRLSRQLSSGVSEIRHTADRWVRSLDVNHFAPDELTVKTKDGVVEITGKHEER QDEHGYSRCFTRKYTLPPGVDPTQVSSSLSPGTLTVEAPMPKLATQSNEITIPVTFESRAQLGG PEAAKSDETAAK
Host	Rabbit
Reactivity	Human
Interspecies Antigen Sequence	Mouse (83)
Quality Control Testing	Antibody reactive against mammalian transfected lysate.
Storage Buffer	In 1x PBS, pH 7.4
Storage Instruction	Store at -20°C or lower. Aliquot to avoid repeated freezing and thawing.

Applications

- Western Blot (Tissue lysate)

HSPB1 MaxPab rabbit polyclonal antibody. Western Blot analysis of HSPB1 expression in human liver.

[Protocol Download](#)

- Western Blot (Transfected lysate)

Western Blot analysis of HSPB1 expression in transfected 293T cell line ([H00003315-T01](#)) by HSPB1 MaxPab polyclonal antibody.

Lane 1: HSPB1 transfected lysate(22.80 KDa).

Lane 2: Non-transfected lysate.

[Protocol Download](#)

- In situ* Proximity Ligation Assay (Cell)

Proximity Ligation Analysis of protein-protein interactions between HSPB1 and F13A1. Huh7 cells were stained with anti-HSPB1 rabbit purified polyclonal 1:1200 and anti-F13A1 mouse monoclonal antibody 1:50. Each red dot represents the detection of protein-protein interaction complex, and nuclei were counterstained with DAPI (blue).

- In situ* Proximity Ligation Assay (Cell)

Proximity Ligation Analysis of protein-protein interactions between HSPB1 and EGFR. HeLa cells were stained with anti-HSPB1 rabbit purified polyclonal 1:1200 and anti-EGFR mouse purified polyclonal antibody 1:50. Each red dot represents the detection of protein-protein interaction complex, and nuclei were counterstained with DAPI (blue).

Gene Info — HSPB1

Entrez GeneID	3315
GeneBank Accession#	NM_001540
Protein Accession#	NP_001531.1
Gene Name	HSPB1
Gene Alias	CMT2F, DKFZp586P1322, HMN2B, HS.76067, HSP27, HSP28, Hsp25, SRP27
Gene Description	heat shock 27kDa protein 1
Omim ID	602195 606595 608634
Gene Ontology	Hyperlink
Gene Summary	The protein encoded by this gene is induced by environmental stress and developmental changes . The encoded protein is involved in stress resistance and actin organization and translocates from the cytoplasm to the nucleus upon stress induction. Defects in this gene are a cause of Charcot-Marie-Tooth disease type 2F (CMT2F) and distal hereditary motor neuropathy (dHMN). [provided by RefSeq]
Other Designations	OTTHUMP00000024846 estrogen-regulated 24 kDa protein heat shock 27kD protein 1 heat shock protein beta-1 stress-responsive protein 27

Pathway

- [MAPK signaling pathway](#)
- [VEGF signaling pathway](#)

Disease

- [Adenocarcinoma](#)
- [Carcinoma](#)
- [Charcot-Marie-Tooth Disease](#)
- [Diabetic Nephropathies](#)
- [Genetic Predisposition to Disease](#)
- [Lung Neoplasms](#)
- [Small Cell Lung Carcinoma](#)